



LIGHTING FOREVER

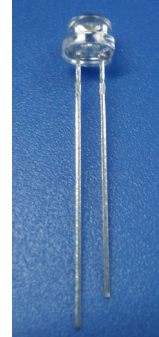
# Technical Data Sheet

## 5.0mm Round Type LED Lamps

### 7324-15UYC/S530-A3

#### Features :

- Choice of various viewing angles
- Available on tape and reel.
- Reliable and robust
- Pb free  
The product itself will remain within RoHS compliant version.



#### Descriptions :

The series is specially designed for applications requiring higher brightness

The led lamps are available with different colors, intensities.

#### Applications :

- TV set
- Monitor
- Telephone
- Computer

PART NO.	Material	Emitted Color	Lens Color
7324-15UYC/S530-A3	AlGaInP	Brilliant Yellow	Water Clear

EVERLIGHT ELECTRONICS CO.,LTD.

<http://www.everlight.com>

Rev.: 1

Page: 1 of 6

Device Number : DLE-0003032

Prepared date: 2010/5/21

Prepared by:

Li ming

DR000023955

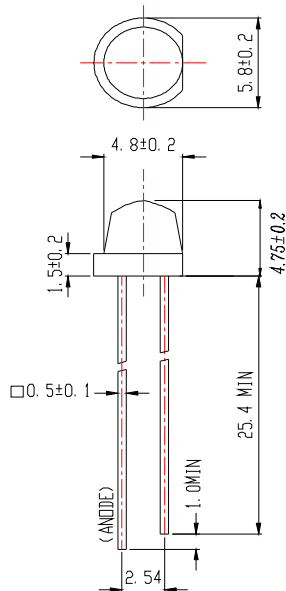
Revision : 1

LifecyclePhase: 正式發行

Release Date:2010-05-24 18:28:01.0

Expired Period: Forever

Package Dimensions



- Notes: 1. All dimensions are in millimetres  
 2. The height of flange must be less than 1.5mm(0.059").  
 3. Without special declared,the tolerance is ±0.25mm.

Absolute Maximum Ratings at Ta = 25

Parameter	Symbol	Rating	Unit
Forward Current	IF	25	mA
Operating Temperature	Topr	-40 to +85	
Storage Temperature	Tstg	-40 to +100	
Soldering Temperature	Tsol	260	
Electrostatic Discharge	ESD	2000	V
Power Dissipation	Pd	60	mW
Peak Forward Current	IF(Peak)	60	mA
Reverse Voltage	VR	5	V

Note: \*1:Soldering time 5 seconds.



LIGHTING FOREVER

# Technical Data Sheet

## 5.0mm Round Type LED Lamps

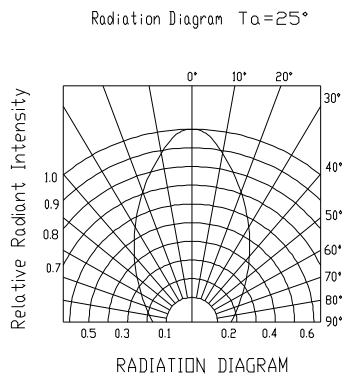
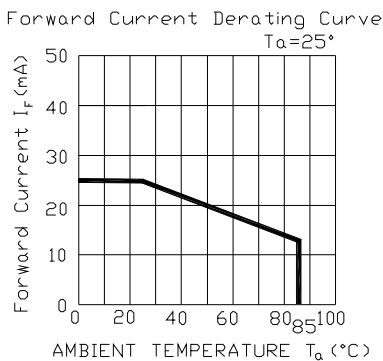
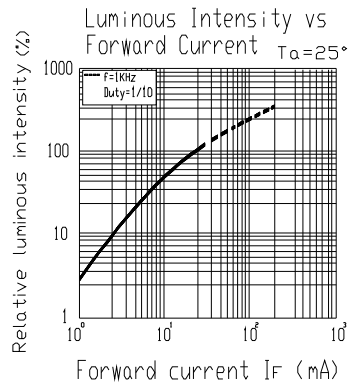
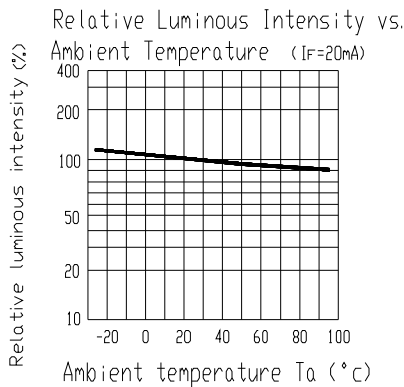
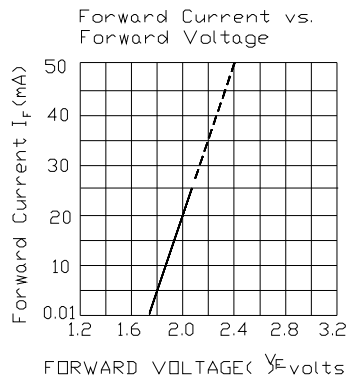
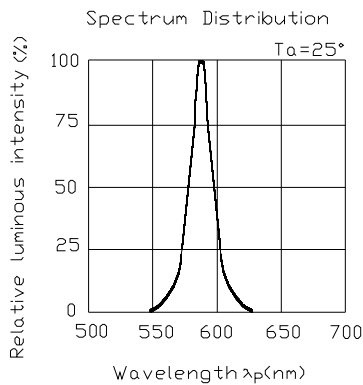
7324-15UYC/S530-A3

### Electro-Optical Characteristics (Ta=25 )

Parameter	Symbol	Condition	Min.	Typ.	Max.	Unit
Forward Voltage	VF	$I_F = 20 \text{ mA}$	/	2.0	2.4	V
Reverse Current	IR	$V_R = 5 \text{ V}$	/	/	10	$\mu\text{A}$
Luminous Intensity	Iv	$I_F = 20 \text{ mA}$	63	125	/	mcd
Viewing Angle	2 1/2	$I_F = 20 \text{ mA}$	/	70	/	deg
Peak Wavelength	$\rho$	$I_F = 20 \text{ mA}$	/	591	/	nm
Dominant Wavelength	d	$I_F = 20 \text{ mA}$	/	589	/	nm
Spectrum Radiation Bandwidth		$I_F = 20 \text{ mA}$	/	15	/	nm

Typical Electro-Optical Characteristic Curves:

(UY)





LIGHTING FOREVER

# Technical Data Sheet

## 5.0mm Round Type LED Lamps

7324-15UYC/S530-A3

### Reliability test items and conditions:

The reliability of products shall be satisfied with items listed below.

Confidence level : 97%

LTPD : 3%

NO	Item	Test Conditions	Test Hours/Cycle	Sample Size	Failure Judgment Criteria	Ac/Re
1	Solder Heat	TEMP : 260 ± 5	10 SEC	76 PCS	Iv Ivt*0.5 or Vf U or Vf L	0/1
2	Temperature Cycle	H : +100 15min 5 min L : -40 15min	300 CYCLES	76 PCS		0/1
3	Thermal Shock	H : +100 5min 10 sec L : -10 5min	300 CYCLES	76 PCS		0/1
4	High Temperature Storage	TEMP : 100	1000 HRS	76 PCS		0/1
5	Low Temperature Storage	TEMP : -40	1000 HRS	76 PCS		0/1
6	DC Operating Life	TEMP : 25 IF = 20mA	1000 HRS	76 PCS		0/1
7	High Temperature / High Humidity	85 / 85% RH	1000 HRS	76 PCS		0/1

Note : Ivt : To test Iv value of the chip before the reliability test

Iv : The test value of the chip that has completed the reliability test

U : Upper Specification Limit

L : Lower Specification Limit



LIGHTING FOREVER

# Technical Data Sheet

## 5.0mm Round Type LED Lamps

7324-15UYC/S530-A3

### Packing Quantity Specification

1.500PCS/1Bag , 5Bags/1Box

2.10Boxes/1Carton

### Label Form Specification



CPN: Customer's Production Number

P/N : Production Number

QTY: Packing Quantity

CAT: Ranks

HUE: Dominant Wavelength

REF: Reference

LOT No: Lot Number

### Notes

- Above specification may be changed without notice. EVERLIGHT will reserve authority on material change for above specification.
- When using this product, please observe the absolute maximum ratings and the instructions for using outlined in these specification sheets. EVERLIGHT assumes no responsibility for any damage resulting from use of the product which does not comply with the absolute maximum ratings and the instructions included in these specification sheets.
- These specification sheets include materials protected under copyright of EVERLIGHT corporation. Please don't reproduce or cause anyone to reproduce them without EVERLIGHT's consent.

EVERLIGHT ELECTRONICS CO., LTD.      Tel: 886-2-2267-2000, 2267-9936  
 Office: No 25, Lane 76, Sec 3, Chung Yang Rd,      Fax: 886-2267-6244, 2267-6189, 2267-6306  
 Tucheng, Taipei 236, Taiwan, R.O.C      <http://www.everlight.com>

EVERLIGHT ELECTRONICS CO.,LTD.

<http://www.everlight.com>

Rev.: 1

Page: 6 of 6

Device Number : DLE-0003032

Prepared date: 2010/5/21

Prepared by:

Li ming

Revision : 1

LifecyclePhase: 正式發行

Release Date:2010-05-24 18:28:01.0

Expired Period: Forever