

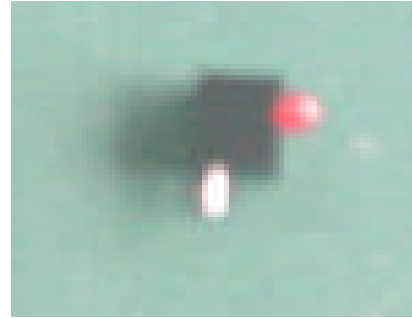


Technical Data Sheet  
3.0mm Round Type LED Lamps

**A2774B/H**

Features :

- Low power consumption
- High efficiency and low cost
- Good control and free combinations on the colors of LED lamps
- Good lock and easy to assembly
- Stackable and easy to assembly
- Stackable vertically and easy to assembly
- Versatile mounting on P.C board or panel
- Stackable horizontally and easy to assembly



Descriptions :

ARRAY=Plastic Holder+Combinations of Lamps  
 The array will easily mount the applicable lamps on any panel up to

Applications :

1.Used as indicators of indicating the Degree, Functions, Positions etc, in electronic instruments.

PART NO.	Chip		Lens Color
	Material	Emitted Color	
264-10HD	GaP	Bright Red	Red Diffused

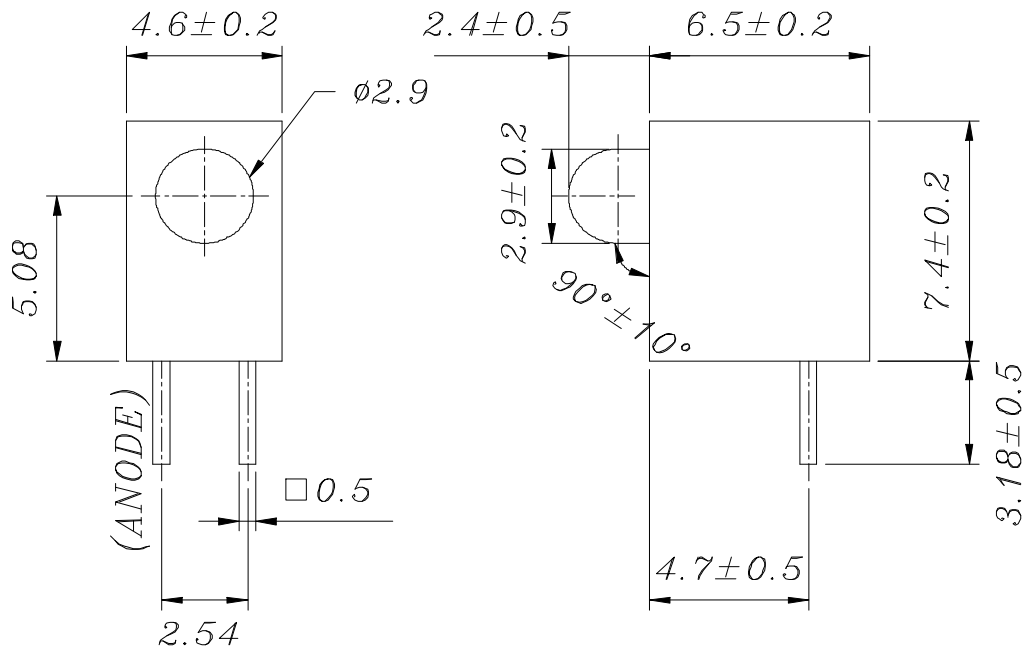


Technical Data Sheet

3.0mm Round Type LED Lamps

**A2774B/H**

**Package Dimensions**



- Notes:** 1.All dimensions are in millimeters, tolerance  
 2.Lead spacing is measured where the lead emerge from the package

**Absolute Maximum Ratings at Ta = 25**

Parameter	Symbol	Rating	Unit
Forward Current	IF	15	mA
Operating Temperature	Topr	-40 to +85	
Storage Temperature	Tstg	-40 to +100	
Soldering Temperature	Tsol	260 ± 5	
Power Dissipation	Pd	45	mW
Peak Forward Current(Duty 1/10 @ 1KHz)	IF(Peak)	50	mA
Reverse Voltage	VR	5	V



EVERLIGHT ELECTRONICS CO.,LTD.

Technical Data Sheet

3.0mm Round Type LED Lamps

**A2774B/H**

**Electro-Optical Characteristics (Ta=25 )**

Parameter	Symbol	Condition	Min.	Typ.	Max.	Unit
Forward Voltage	V <sub>F</sub>	I <sub>F</sub> = 10 mA	1.5	2.0	2.4	V
Reverse Current	I <sub>R</sub>	V <sub>R</sub> = 5 V	/	/	10	μ A
Luminous Intensity	I <sub>v</sub>	I <sub>F</sub> = 10 mA	0.5	1.6	/	mcd
Viewing Angle	2 1/2	I <sub>F</sub> = 10 mA	/	60	/	deg
Peak Wavelength	p	I <sub>F</sub> = 10 mA	/	697	/	nm
Dominant Wavelength	d	I <sub>F</sub> = 10 mA	/	650	/	nm
Spectrum Radiation Bandwidth		I <sub>F</sub> = 10 mA	/	90	/	nm

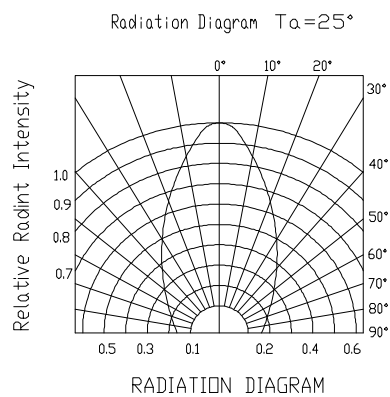
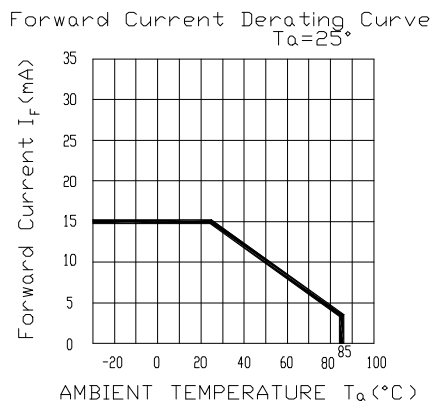
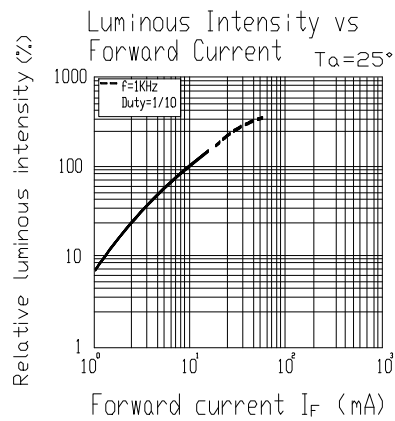
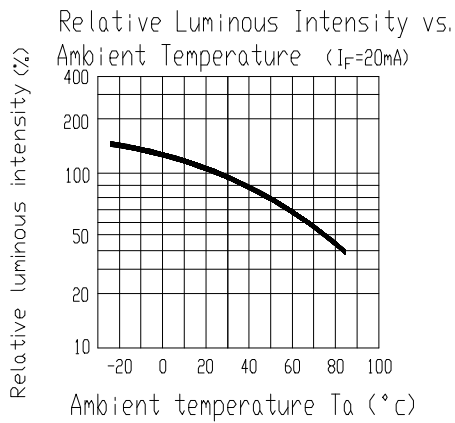
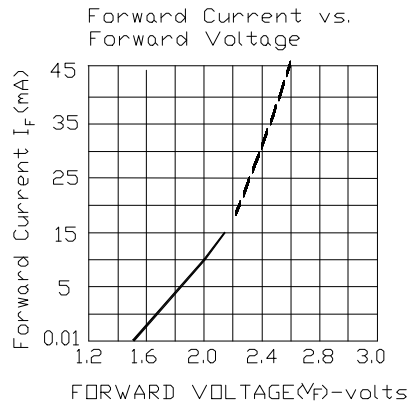
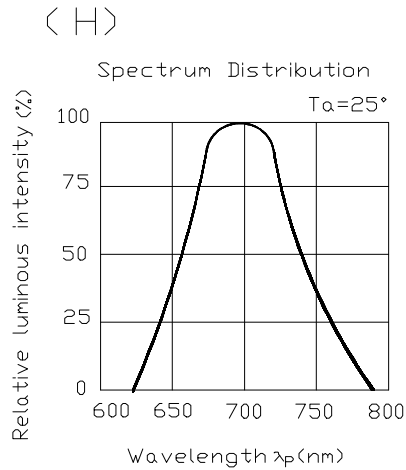


Technical Data Sheet

3.0mm Round Type LED Lamps

A2774B/H

Typical Electro-Optical Characteristic Curves:





## Technical Data Sheet

## 3.0mm Round Type LED Lamps

A2774B/H

Reliability test items and conditions:

NO	Item	Test Conditions	Test Hours/Cycle	Sample Size	Ac/Re
1	Solder Heat	TEMP : 260 ± 5	10 SEC	76 PCS	0/1
2	Temperature Cycle	H : +100 15min 5 min L : -40 15min	300 CYCLES	76 PCS	0/1
3	Thermal Shock	H : +100 5min 10 sec L : -10 5min	300 CYCLES	76 PCS	0/1
4	High Temperature Storage	TEMP : 100	1000 HRS	76 PCS	0/1
5	Low Temperature Storage	TEMP : -40	1000 HRS	76 PCS	0/1
6	DC Operating Life	TEMP : 25 IF = 10mA	1000 HRS	76 PCS	0/1
7	High Temperature / High Humidity	85 / 85% RH	1000 HRS	76 PCS	0/1



# EVERLIGHT ELECTRONICS CO.,LTD.

## Technical Data Sheet

### 3.0mm Round Type LED Lamps

#### **A2774B/H**

#### Packing Quantity Specification

1. 500PCS/1Bag , 4Bags/1Box
2. 10Boxes/1Carton

#### Label Form Specification



MADE IN TAIWAN

CPN: Customer ' s Production Number

P/N : Production Number

QTY: Packing Quantity

CAT: Ranks

HUE: Peak Wavelength

REF: Reference

LOT No: Lot Number

MADE IN TAIWAN: Production Place

#### Notes

1. Above specification may be changed material change for above specification.
2. When using this product, please observe the absolute maximum ratings and the instructions for using outlined in these specification sheets. EVERLIGHT assumes no responsibility for any damage resulting from use of the product which does not comply with the absolute maximum ratings and the instructions included in these specification sheets.
3. These specification sheets include materials protected under copyright of EVERLIGHT corporation. Please don ' t reproduce or cause anyone to reproduce them without EVERLIGHT ' s consent.

EVERLIGHT ELECTRONICS CO., LTD.

Office: No 25, Lane 76, Sec 3, Chung Yang Rd,  
Tucheng, Taipei 236, Taiwan, R.O.C

Tel: (886-2-2267-2000, 2267-9936

Fax: 886-2267-6244, 2267-6189, 2267-6306

<http://www.everlight.com>