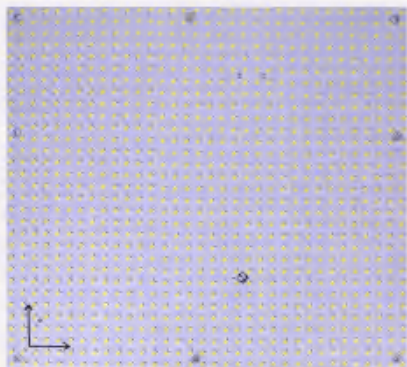


Specification



Best use: widely used in 4-6cm thickness decorative lighting box or ceiling soft film lighting.

SN-P7.5-E-W

Light box-Dynamic light box

5/12V DC	IP20 IP	2835 LED	3years QA
120° View angle	CE compliant	RoHS compliant	FC compliant

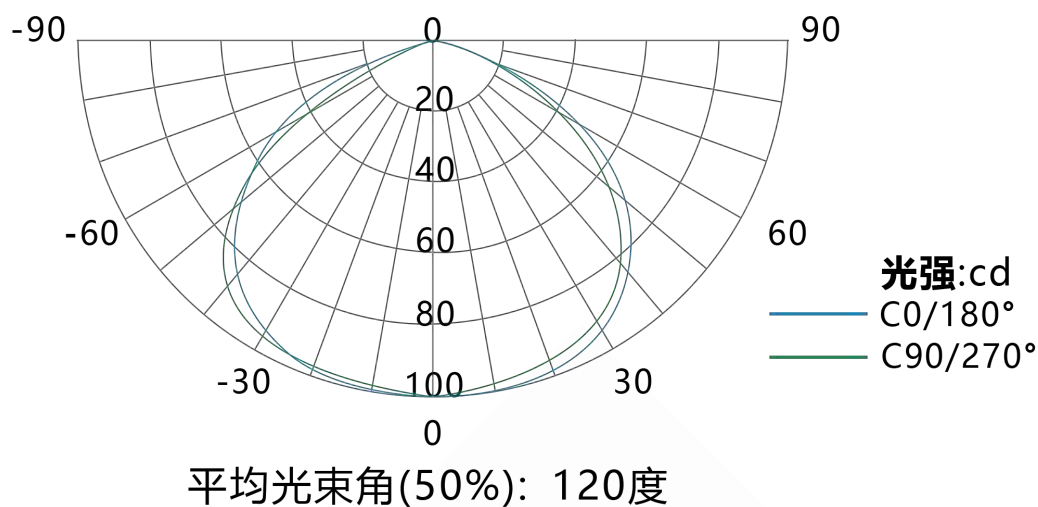
Model	Voltage	LED	Power	Size	LED Number	Color
SN-P10-F-W-5	DC5V	SM2835	10W	320*320mm	1024pcs	6000K
SN-P10-F-W-12	DC12V	SM2835	15W	320*320mm	1024pcs	6000K

IP	View angle	Working Temperature	CRI	LED Spacing
IP20	120°	-40-+60℃	≥70	10mm

▼Features

1	DC5V/DC12V low voltage power supply, safe and reliable, constant current IC drive, brightness consistency.
2	Adopt 1.6mm thick double-sided glass fiber board FR4 international material for heat dissipation, with better heat dissipation performance.
3	Adopt 3V SMD2835, high brightness, low light fading, high lumen, good color, long life.
4	The distance between beads is 7.5mm, the animation is exquisite, it can be used for > 2.5cm thick light box and decorative background.
5	Line signal connection, facilitate installation and maintenance, clean wiring.
6	Single point single control, no screen flash, no glare, conducive to watching.

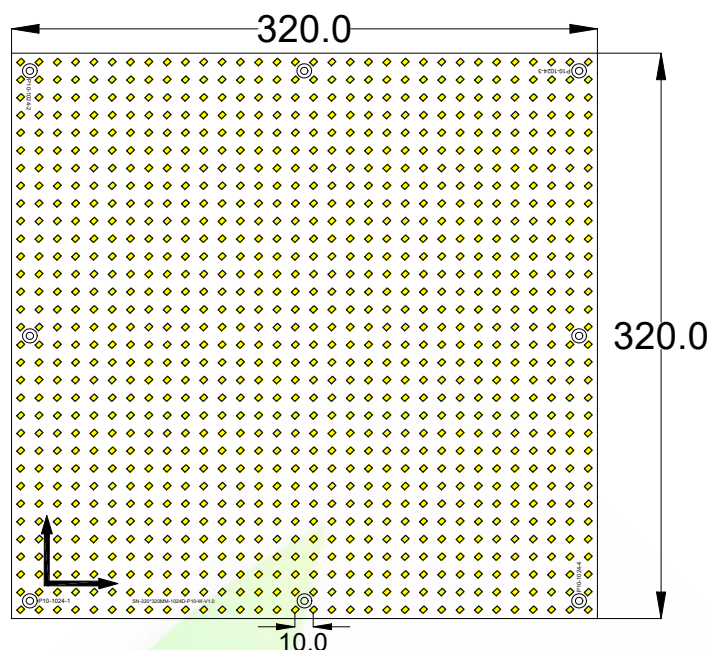
▼ Light Distribution



▼ Using parameter

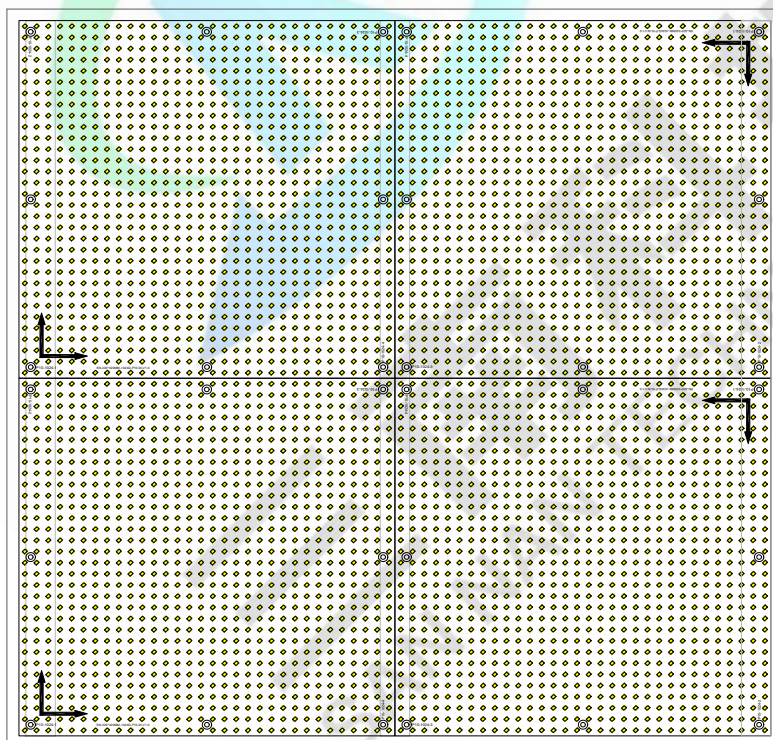
Link	— Point10000LED
controller type	SN-K502
Color	white
Voltage	DC12V
Weight	205g/pcs-1024D
Life Span	5years/21900H
Working Temperature	-25-60℃
Storage Temperature	-25-60℃
Texture	FR4
Connection Type	Line and terminal wire
Thickness	1.6mm
Installation Way	ST2.9/screw
Video Format	SWF/AVI

▼Dimension(mm)

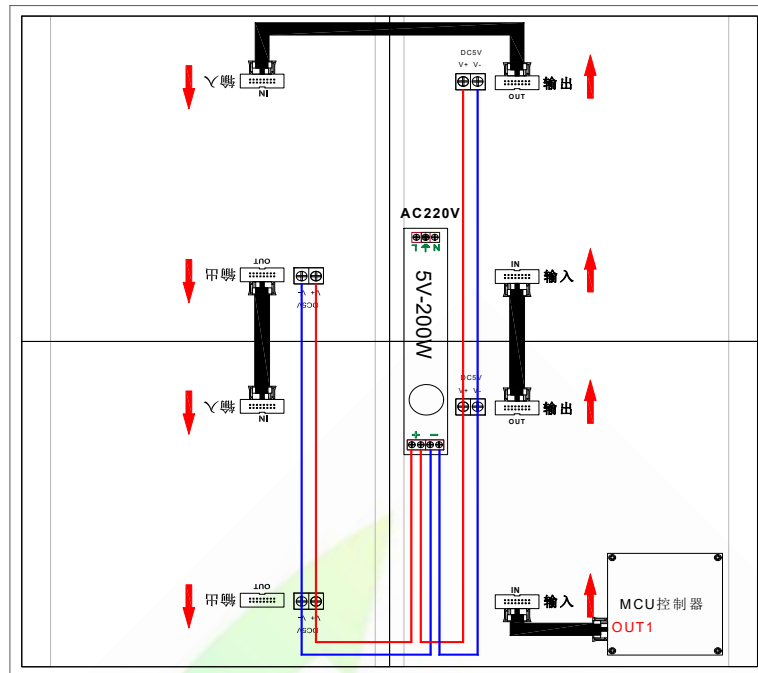


▼Controller installation diagram

Front



Back

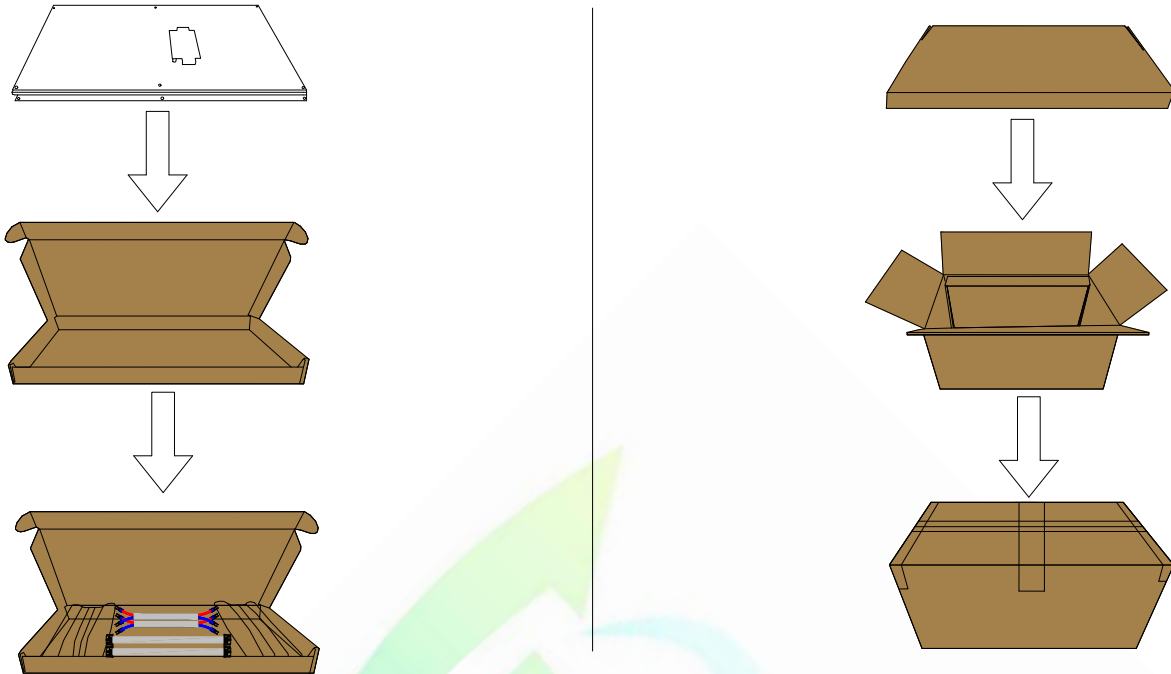


▼ Setup Warning

- ✧ the lamp board shall be installed IN the direction of the lamp board, the signal line shall be connected IN the direction of the out-in arrow, and the power cord shall be installed IN accordance with the positive and negative instructions.
- ✧ the personnel receiving electricity must hold the electrician certificate. During the installation, the power should be evenly distributed behind the light box or uniformly placed in the distribution box.
- ✧ the length of the light box should be determined according to the size of the light board and the thickness of the light box profile.
- ✧ please refer to the wiring scheme in the connection diagram. The power line shall not be less than 2.5 square meters of pure copper wire national standard electronic wire. The maximum load current per square meter is 8A.
- ✧ the positive and negative poles of the power supply and the male and female of the signal line should be plugged in properly, and should not be connected reversely, causing short circuit of the lamp board;
- ✧ if the lamp board is not on when it is live, the signal line shall be broken first and then the power line shall be broken to damage the signal line;
- ✧ adjust the electric plate to the appropriate torque when installing the lamp plate, select ST2.9 pan head screw, the pan head diameter cannot exceed 8mm, lock the aluminum profile, fix it at 4 corners, prevent excessive force from damaging the lamp plate and bead;
- ✧ to ensure waterproof and anticorrosive, after the power cord is screwed into the terminal, it is recommended to inject the terminal with single-component silica gel (or neutral glass glue or waterproof grease) to cover the exposed copper wire of the power cord for protection;
- ✧ please do not touch the product with live electricity or work with live electricity. Please turn off the power when maintaining the light box.

※ it is recommended to use the switch power (with short-circuit protection, overvoltage protection and overcurrent protection) with 80% power.

▼Packaging



▼Packing instruction

- ※Adopt inner package size: 510*250*40mm
- ※Carton size: 530*280*320mm
- ※2PCS/inner box, 14PCS in 7 layers per carton
- ※净重 (NW) : 6.57(1±10%)kg
- ※毛重 (GW) : 8.39(1±10%)kg

Note: the above package quantity and weight only refer to the package as shown in the figure. When other packages are used, the package quantity and weight will be different. The actual package shall prevail.