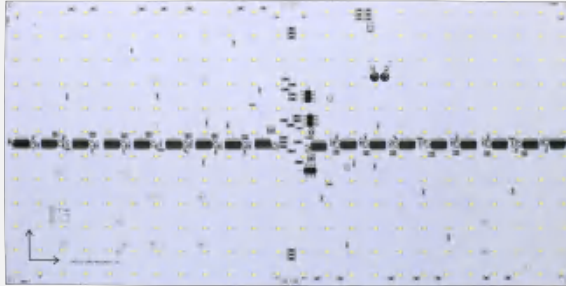


Specification



SN-P20-A-W

Light box-Dynamic light box

Best use: widely used in 6-10cm thickness decorative lighting box or ceiling soft film lighting.

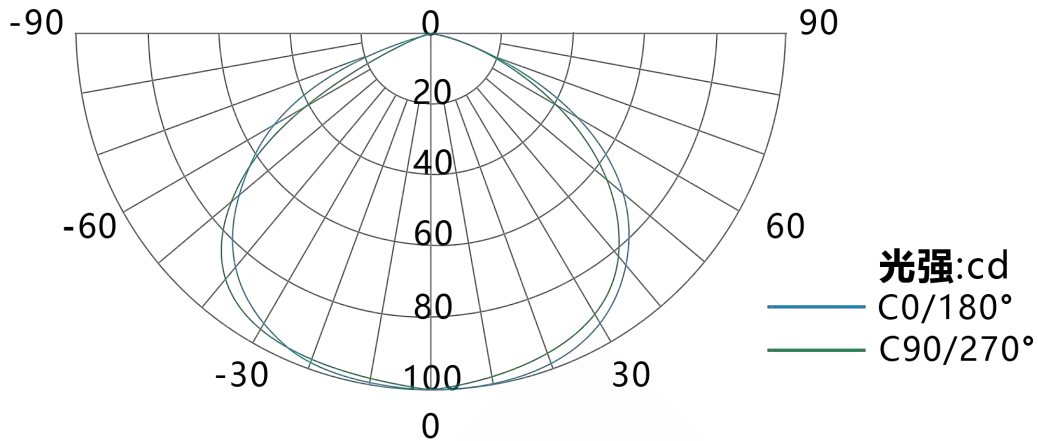
12V DC	IP20 IP	2835 LED	3years QA
120° View angle	CE compliant	RoHS compliant	FC compliant

Model	Voltage	LED	Power	Size A*B	LED Number	Color
SN-P20-A-W-288	DC12V	SMD2835	40W	480*240mm	288pcs	7000-8000K
SN-P20-A-W-216	DC12V	SMD2835	30W	360*240mm	216pcs	7000-8000K
SN-P20-A-W-108	DC12V	SMD2835	15W	360*120mm	108pcs	7000-8000K
SN-P20-A-W-72	DC12V	SMD2835	10W	240*120mm	72pcs	7000-8000K

▼ Features

1	DC12V low voltage power supply, safe and reliable, constant current IC drive, brightness consistency.
2	Adopt 1.6mm thick and high heat conduction aluminum substrate for heat dissipation to improve the service life of the product.
3	Adopt 9V SMD2835, high brightness, low light fading, good color, long life.
4	The distance between beads is 2CM, the animation operation is meticulous and considerable, and it can be used for > 6CM thick light box.
5	Each lamp bead works independently, damage one does not affect the operation of other lamp bead, free of maintenance.
6	Separate control connection, each lamp board work independently, convenient maintenance and installation.

▼ Light Distribution

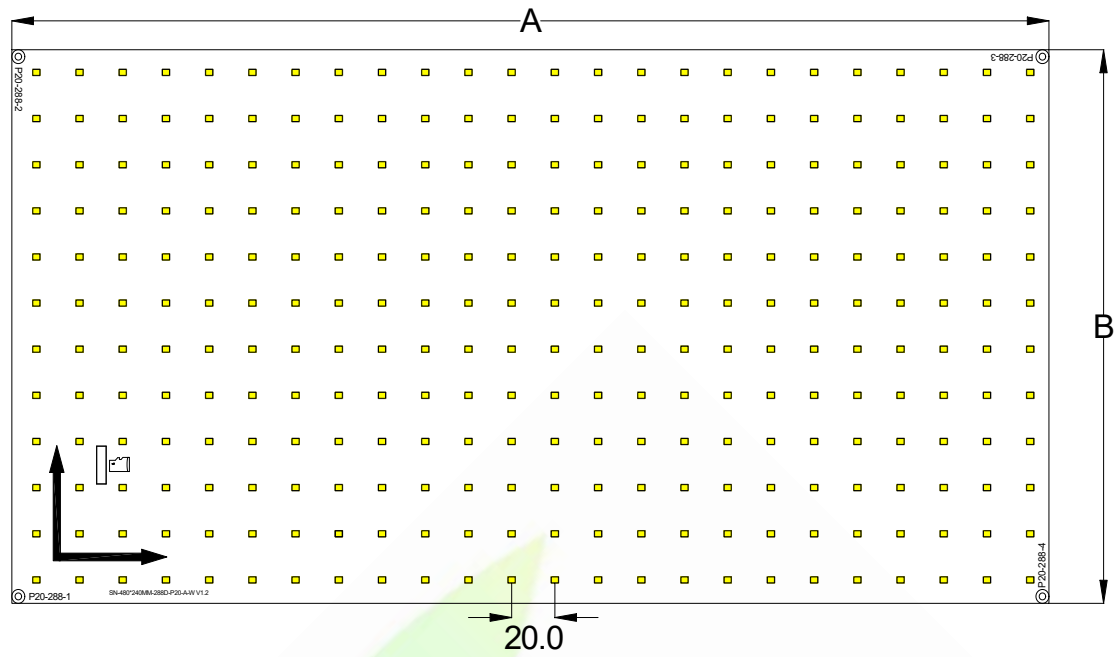


平均光束角(50%): 120度

▼ Using parameter

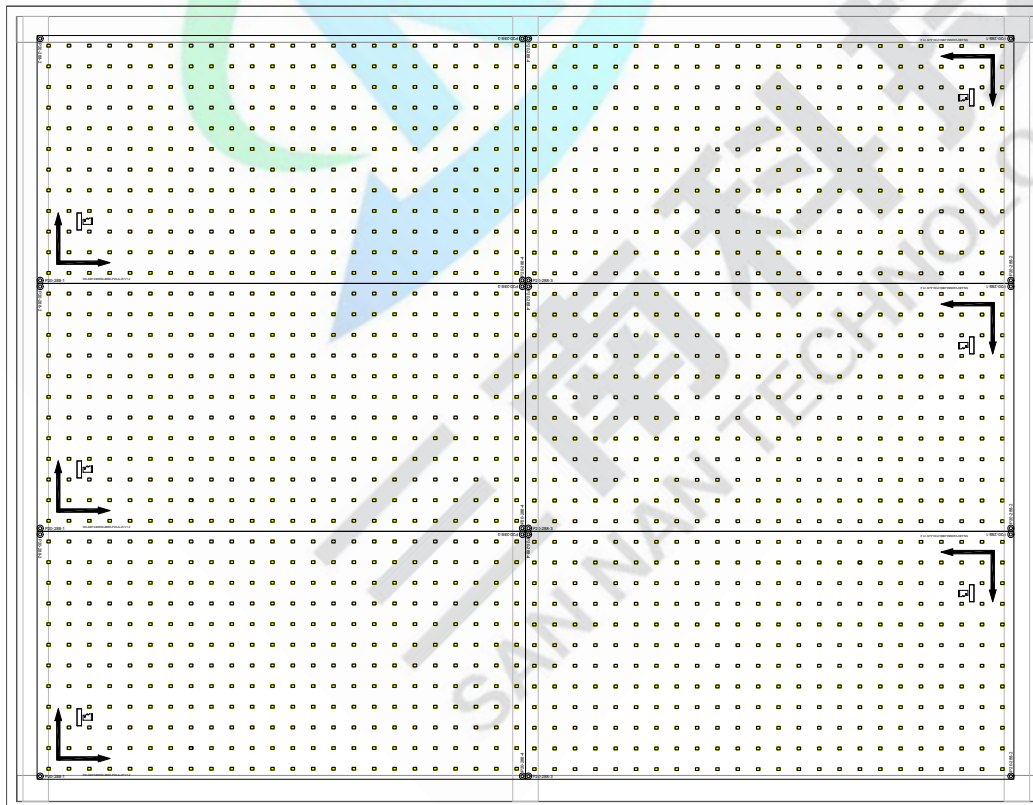
Link	— Point4000LED
controller type	SN-K501
Color	white
Voltage	DC12V
Weight	225g/pcs-288
Life Span	5years/21900H
Working Temperature	-25-60°C
Storage Temperature	-25-60°C
Texture	MCPCB
Connection Type	Line and terminal wire
Thickness	1.6mm
Installation Way	ST2.9/Tapping Screw
Video Format	SWF/AVI

▼ Dimension(mm)

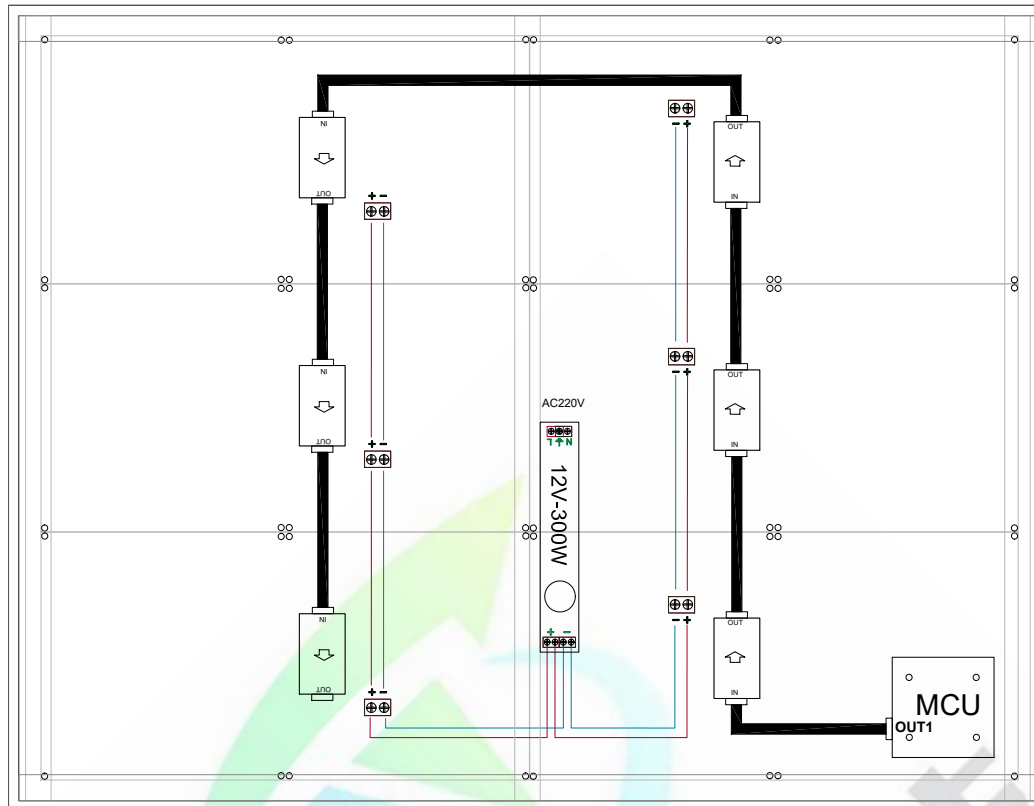


▼ Controller installation diagram

Front



Back



▼ Setup Warning

- ※ the lamp board shall be installed IN the direction of the lamp board, the signal line shall be connected IN the direction of the out-in arrow, and the power cord shall be installed IN accordance with the positive and negative instructions.
- ※ the personnel receiving electricity must hold the electrician certificate. During the installation, the power should be evenly distributed behind the light box or uniformly placed in the distribution box.
- ※ the length of the light box should be determined according to the size of the light board and the thickness of the light box profile.
- ※ please refer to the wiring scheme in the connection diagram. The power line shall not be less than 2.5 square meters of pure copper wire national standard electronic wire. The maximum load current per square meter is 8A.
- ※ the positive and negative poles of the power supply and the male and female of the signal line should be plugged in properly, and should not be connected reversely, causing short circuit of the lamp board;
- ※ if the lamp board is not on when it is live, the signal line shall be broken first and then the power line shall be broken to damage the signal line;
- ※ adjust the electric plate to the appropriate torque when installing the lamp plate, select ST2.9 pan head screw, the pan head diameter cannot exceed 8mm, lock the aluminum profile, fix it at 4

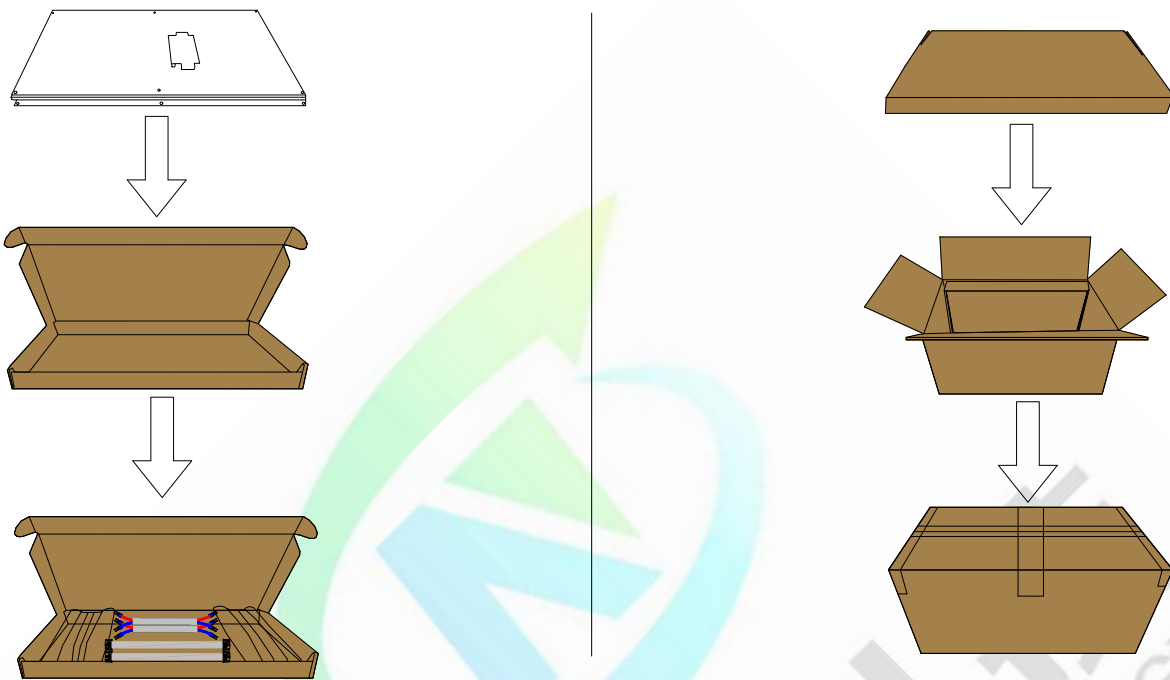
corners, prevent excessive force from damaging the lamp plate and bead;

※ to ensure waterproof and anticorrosive, after the power cord is screwed into the terminal, it is recommended to inject the terminal with single-component silica gel (or neutral glass glue or waterproof grease) to cover the exposed copper wire of the power cord for protection;

※ please do not touch the product with live electricity or work with live electricity. Please turn off the power when maintaining the light box.

※ it is recommended to use the switch power (with short-circuit protection, overvoltage protection and overcurrent protection) with 80% power.

▼Packaging



▼Packing instruction

※ Adopt inner package size: 510*250*40mm

※ Carton size: 530*280*320mm

※ 2PCS/inner box, 14PCS in 7 layers per carton

※ 净重 (NW) : 6.57(1±10%)kg

※ 毛重 (GW) : 8.39(1±10%)kg

Note: the above package quantity and weight only refer to the package as shown in the figure. When other packages are used, the package quantity and weight will be different. The actual package shall prevail.