

AC/DC·HVBUCK·Power·Switch IC

1. Feature

Designed for HVBUCK™ high voltage step-down conversion

Internal integrated 750 V high voltage power switch

Fixed output voltage settings:

LN8K05A: $V_{out} = 5\text{ V}$

LN8K05B: $V_{out} = 7.5\text{ V}$

LN8K05C: $V_{out} = 12.5\text{ V}$

Built-in peak switch current limit function

Reliable fast peak current limiting operation

Short circuit, overload and overheat protection

Very low standby power and extremely high conversion efficiency

Standby power is less than 0.5 W when the whole machine is in standby

Meet energy efficiency requirements such as Energy Star and ErP

Available in a highly isolated SOP6/DIP7 package

Minimal peripheral circuit connections and number of devices

Maximum output current capability up to 150 mA

2. Applications

Replaceable Capacitor Step-down to Achieve 0.5 W Standby Power

Household Appliance Controller Board Power Supply with Standby Power of 0.5 W

Electrical Controller Power Supply with Standby Power of 0.5 W

Other Non-isolated High Voltage Step-down Power Supply Applications

3. Description

The LN8K05A/B/C is a high performance current mode intelligent power switching controller IC designed for non-isolated DC to DC switching buck converters such as small appliance control board power supplies. It integrates a complete PWM/PFM hybrid control circuit, a power switch circuit with up to 750 V withstand voltage, fault detection and protection circuit, clock and delay control circuit, etc., which can be provided up to 150 mA maximum output current capability under the ultra-wide grid voltage of 85-300 Vac. Complete internal circuit design minimizes the number of external components, and requires only a few devices to implement a typical BUCK topology switching power supply design. The well-functioning multiple fault protection circuit further simplify the design of the power supply and reduce the system cost.

The maximum output current capability is set to 150 mA internally by the chip. The external is not required to set the current limit, which reduces the number of devices used. According to the different requirements of the output characteristics, the circuit can be operated flexibly in different connection structures, therefore the positive voltage or negative voltage output can be conveniently realized to meet the different requirements of the driving relay or the thyristor circuit, and the output

voltage is fixedly set by the chip inside, and the product model has three output voltages: 5 V/ 7.5 V/ 12.5 V.

The chip integrates a clock generation circuit with maximum time limit function, cycle-by-cycle current limit circuit with leading edge blanking, thermal shutdown circuit with hysteresis, output short circuit and overload protection and restart circuit.

Built-in new generation smartEnergy™ energy efficiency control technology, can meet the new national energy efficiency standards of standby power consumption as low as 0.5 W, meet the standards such as ErP, Energy Star.

Standard green packaging for SOP6 / DIP7 is available.

4. Functional Block Diagram

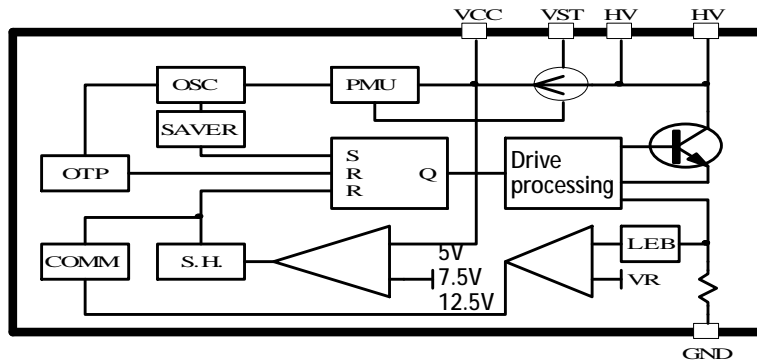


Fig1. Internal functional block diagram

5. Pin Definitions

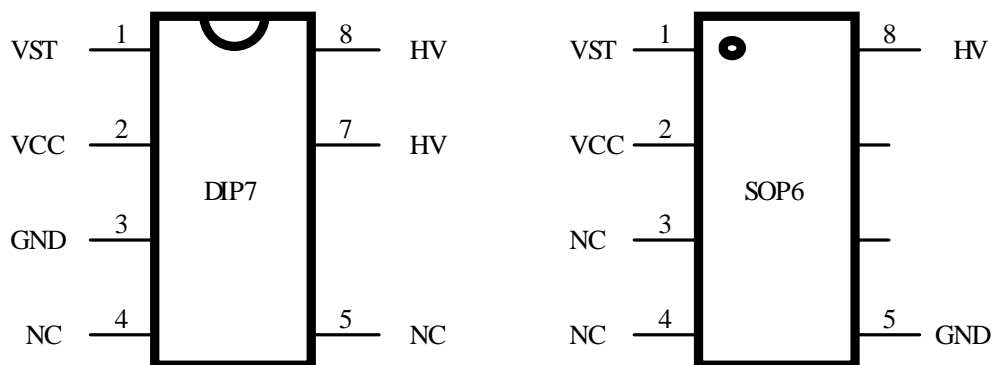


Fig2. Pin Definitions

6. Pin Function Description

PIN		Symbol	Function
DIP7	SOP6		
1	1	VST	Start trigger pin, external start resistor to input DC voltage positive
2	2	VCC	Power supply pin
3	5	GND	Ground pin
4	3	NC	Unused, no internal connection
5	4	NC	Unused, no internal connection
7,8	7,8	HV	High voltage switch pin, connected to input DC high voltage positive

7. Typical Simplified Schematic

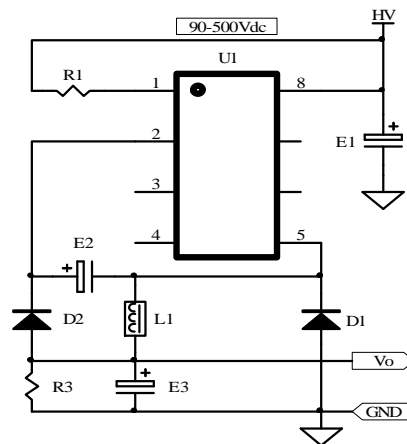


Fig3. Typical Simplified Schematic(SOP6)

8. Absolute Maximum Ratings

Parameter		Rating	Units
VCC pin Voltage		18	V
Other Pin Input Voltage (except HV)		-0.3 to VCC+0.3	V
HV Pin Voltage		-0.3 to +750	V
Peak Switch Current		450***	mA
PD		800	mW
Min/Max Operating Junction Temperature T _j		-20 to +150	°C
Min/Max Storage Temperature T _{stg}		-55 to +150	°C
Recommended Soldering Conditions		+260 °C, 10 S	
ESD	HBM	2500	V
	MM	250	V

Note***: Only 1 ms pulses with a period of not less than 1 s are allowed to pass.

9. Recommended Operating Conditions

Symbol	Parameter	Min	Typ	Max	Units
V_{IN}	Input DC Voltage	100	-	550	Vdc
I_{PEAK}	Peak Switching Current	-	-	300	mA
TA	Operating Ambient Temperature	-20	-	+85	°C

10. Electrical Characteristics($T_a = 25\text{ }^{\circ}\text{C}$, $R_{st}=1.0\text{ M}\Omega$, $C_{VCC}=22\mu\text{F}$, if not otherwise noted)

Power Switch Section

Symbol	Parameter	Test Conditions	Min	Typ	Max	Units
BV_{HV}	Max. Switching pin Voltage	$V_{CC}=0\text{ V}$, $I_{HV}=1\text{ mA}$	750	800	-	V
I_{HV}	Switch Leakage Current	$HV=650\text{ V}$	-	-	100	μA
V_{HVON}	Switch Forward Voltage	$I_{HV}=250\text{ mA}$	-	3	-	V
T_{on}	Switch on Delay	$I_{HV}=250\text{ mA}$	-	100	-	nS
T_{off}	Switch off Delay	$I_{HV}=250\text{ mA}$	-	300	-	nS

OSC Section

Symbol	Parameter	Test Conditions	Min	Typ	Max	Unit
F_{OSC}	Switching Frequency	Determined by external inductance	-	35	-	kHz
ΔF_{OSC_T}	F_{OSC} VS T_a	$T_J=0-100$	-3	-	+3	%
ΔF_{OSC_V}	F_{OSC} VS V_{CC}	$I_{HV}=0.2-0.4\text{ A}$	-3	-	+3	%

PWM Section

Symbol	Parameter	Test Conditions	Min	Typ	Max	Unit
T_{ONMIN}	Min. Turn-on Time		-	0.5	-	μS
T_{ONMAX}	Max. Turn-on Time		-	8	-	μS
T_{OFFMAX}	Min. Turn-off Time		-	16	-	μS
Gain	PWM Gain		-	3.5	-	V/V

Current Limit Section

Symbol	Parameter	Test Conditions	Min	Typ	Max	Unit
I_{LIMIT}	Peak Current Limit		-	250	-	mA
T_{LEB}	Leading Edge Blanking Time		-	250	-	nS
T_{ILD}	Current Limit Delay	L=800 uH	-	250	-	nS

Over Temperature Protection Section

Symbol	Parameter	Test Conditions	Min	Typ	Max	Units
t_{OTPON}	Over Temperature Protection On		130	140	150	°C
T_{OPT}	Over Temperature Protection Delay		-	500	-	nS

Power Supply Section

Symbol	Parameter	Test Conditions	Min	Typ	Max	Units
I_{ST}	Starting Current	VCC<4.5 V	-	10	50	UA
V_{ST}	Starting Voltage	VCC=0→Vo	-	7.5	-	V
V_{OFF}	VCC Undervoltage Shutdown Voltage	VCC=Vo→0	-	3.2	-	V
V_{OVP}	Shutdown Enable Threshold Voltage	LN8K05A, Iout=20mA	4.5	5	5.5	V
		LN8K05B, Iout=20mA	7	7.5	8	
		LN8K05C, Iout=20mA	12	12.5	13	

Thermal Data

Symbol	Parameter	Rating		Unit
		SOP6	DIP7	
θ_{JA}^1	Thermal Resistance Junction-Ambient	80	70	°C/W
θ_{JC}^2	Thermal Resistance Junction-Case	30	20	°C/W

Notes: 1. All leads are soldered on a 200 mm² copper foil with 2 oz thick to measuring. 2. Measured on the surface of the package near pin 7.

11. This is a blank page.

12. Application and Implementation

12.1 Start-up Section

At startup, the RST resistor triggers the internal high-voltage current source to charge the VCC capacitor. When the VCC voltage rises to 7.5 V, the power management circuit starts to work, turns on the internal reference voltage, turns off the high-voltage current source, and pulse is triggered to turn the power switch on when the voltage drops to 5 V. After normal operation, it is external (the output) supplies the required energy to VCC. Before the circuit works stable, ensure that the VCC voltage does not fall to the VCC undervoltage protection point, otherwise the circuit will enter the fault protection mode and try to start again after a certain time.

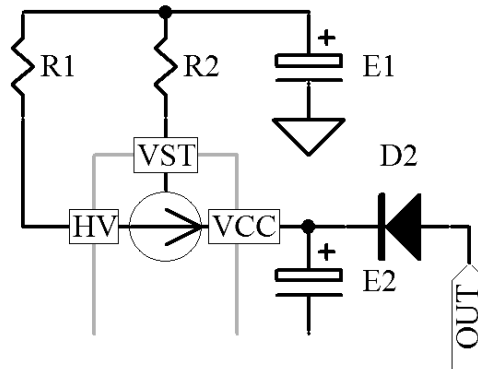


Fig4. Start-up Circuit diagram

12.2 PMW and VCC Feedback Control

The control circuit operates in current mode, and the power switch is turned on at the leading edge of each clock in the non-fault state. When the voltage generated by the peak inductor current through current limiting resistor reaches the internal current comparator threshold voltage, the switch is turned off, and the peak current is controlled by the condition for each switching cycle, thereby achieving a fixed output current. By feeding back the output voltage to VCC and comparing it to the internal reference (typical value is 5 V/ 7.5 V/ 12.5V) on the VCC voltage comparator inside the chip, the current cycle is terminated when the VCC voltage reaches the voltage limit point, and the internal feedback control circuit thus establishes and maintains an error signal, which is constantly adjusted according to the error signal-like turn-off time, thereby maintaining the output voltage stable under specified load conditions. If the VCC feedback loop is disconnected, the system will continue to enter a restart state to protect the chip from damage.

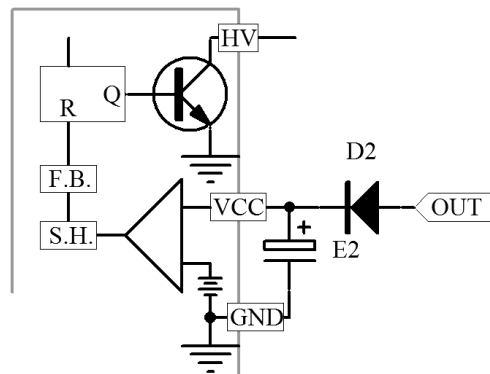


Fig5. Feedback Circuit diagram

12.3 Cycle-by-cycle Current Limit

During each turn-on cycle, the voltage developed by the sampled inductor current is compared to the internal reference voltage. If the specified value is reached, the current cycle is immediately aborted and the output shutdown state is locked until the next switching pulse comes, thereby achieving cycle-by-cycle current limiting, which is limited by the internal circuit for the maximum current during overload. The leading edge blanking circuit automatically masks the sampling circuit for 300 nS time at the beginning of each current signal to eliminate the influence of the turn-on current spike caused by the transformer turn-to-turn capacitance and the output diode reverse recovery time on the switching action detection.

12.4 VCC Undervoltage Protection

When the circuit starts, the output is automatically locked in the off state before the VCC voltage reaches 7.5 V. After the VCC reaches 7.5 V, the reference voltage is established to make the internal circuit fully work. If the VCC voltage drops to 3.2 V during operation, the undervoltage comparator operates. The output is reset to the shutdown state and the trigger circuit enters the restart mode; if the VCC voltage reaches the overvoltage comparator threshold, the current cycle is turned off and latched until the next clock pulse switch is turned back on.

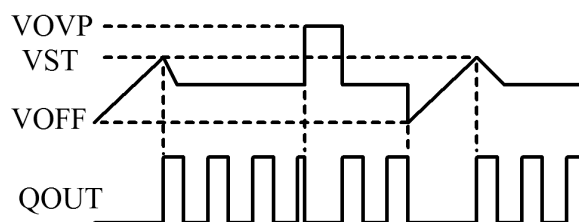


Fig6. UVLO Waveform diagram

12.5 Smart Energy Efficiency Processing

After the output load drops to a certain value, the system energy-efficiency processing circuit automatically switches the working mode to the light-load mode to improve the light load efficiency. When the output is completely empty, a small number of switching times and switching current are kept so that the system consumes only very little power.

12.6 No Noise Mode

At no-load and light-load conditions, the system operates in an advanced pulse output state, locking the output pulse train out of the human audible audio range in real time, thereby avoiding audible noise.

12.7 Over Temperature Protection

When the circuit works normally, the internal temperature detection circuit detects the core temperature of the chip in real time. If the temperature reaches the set over temperature protection threshold, the output will be turned off and locked until the VCC voltage drops below 3.2 V, and the system enters the restart mode. A typical over temperature protection threshold is 140 °C.

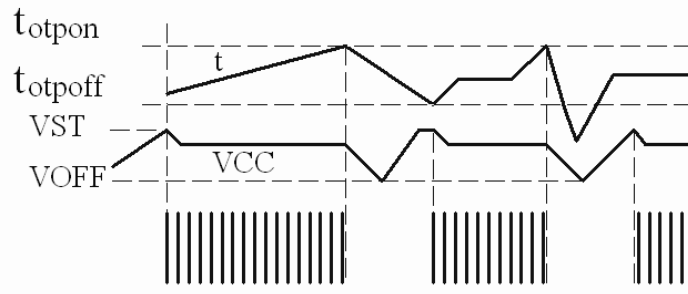


Fig7. OTP Waveform diagram

12.8 Output Overload and Short Circuit Protection

In the normal output of the system, the switch current is set by the current limiting resistor. When the output power continues to increase and tries to exceed the maximum design limit current of the system, the output voltage will start to decrease rapidly with the further increase of the output current until the VCC voltage drops to 3.2 V. The circuit enters the restart mode; when the output is shorted, it will directly cause the VCC voltage to drop rapidly to 3.2 V, and the circuit enters the restart mode.

13. Layout Guidelines

13.1 Principles of high-frequency layout

Minimize area of switched current loops. In a buck regulator there are two loops where currents are switched very fast. The first loop starts from the input capacitor, to the regulator HV pin, to the regulator VCC pin, to the inductor then out to the output capacitor and load. The second loop starts from the output capacitor ground, to the regulator GND pins, to the inductor and then out to the load (see Fig.8).

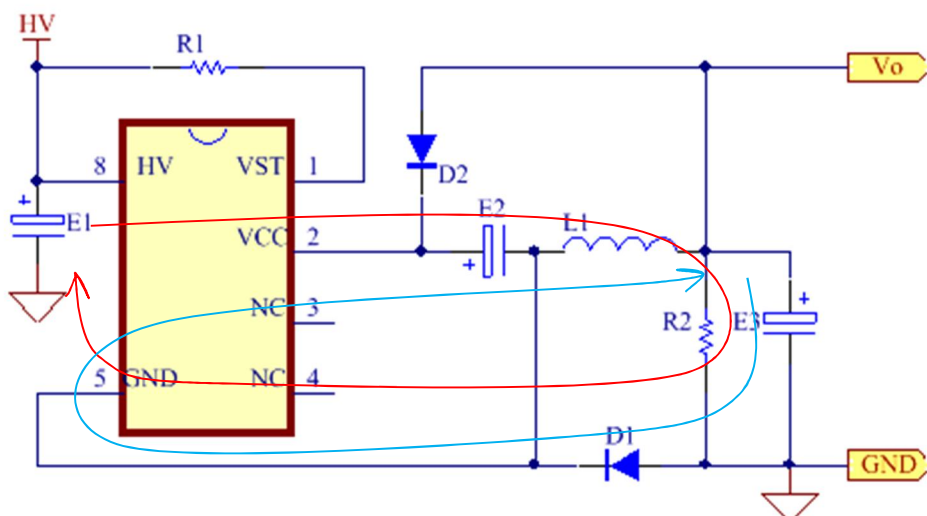


Fig8. Typical current loop diagram

13.2 Typical layout reference

An example of a typical PCB layout is shown below.

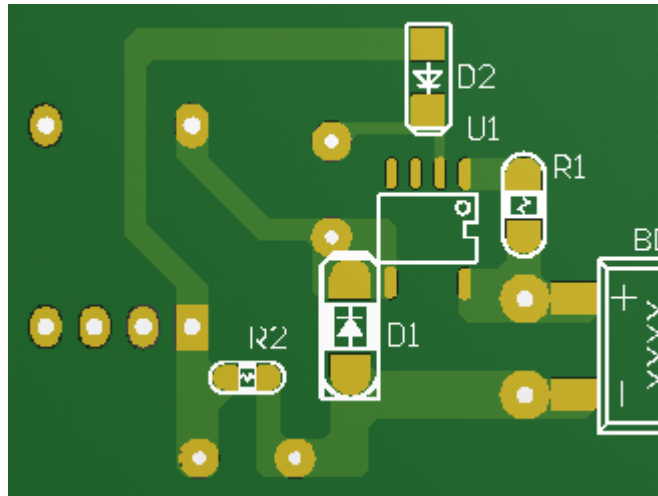


Fig9. Typical layout reference (bottom view)

14. Typical Application Circuit Schematic (input : 90~265 Vac)

Schematic 1 (SOP6)

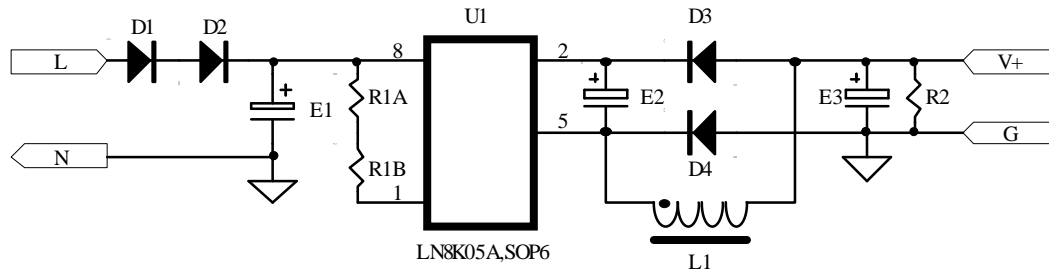


Fig10. Positive voltage output application diagram1

Note: When the chip in the above figure is replaced with LN8K05B, the output voltage of 7.5V can be obtained.
When the chip in the above figure is replaced with LN8K05B, the output voltage of 7.5V can be obtained.

Schematic 2 (SOP6)

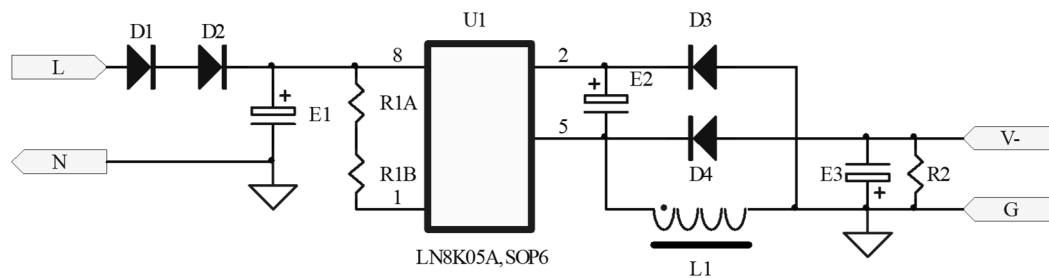
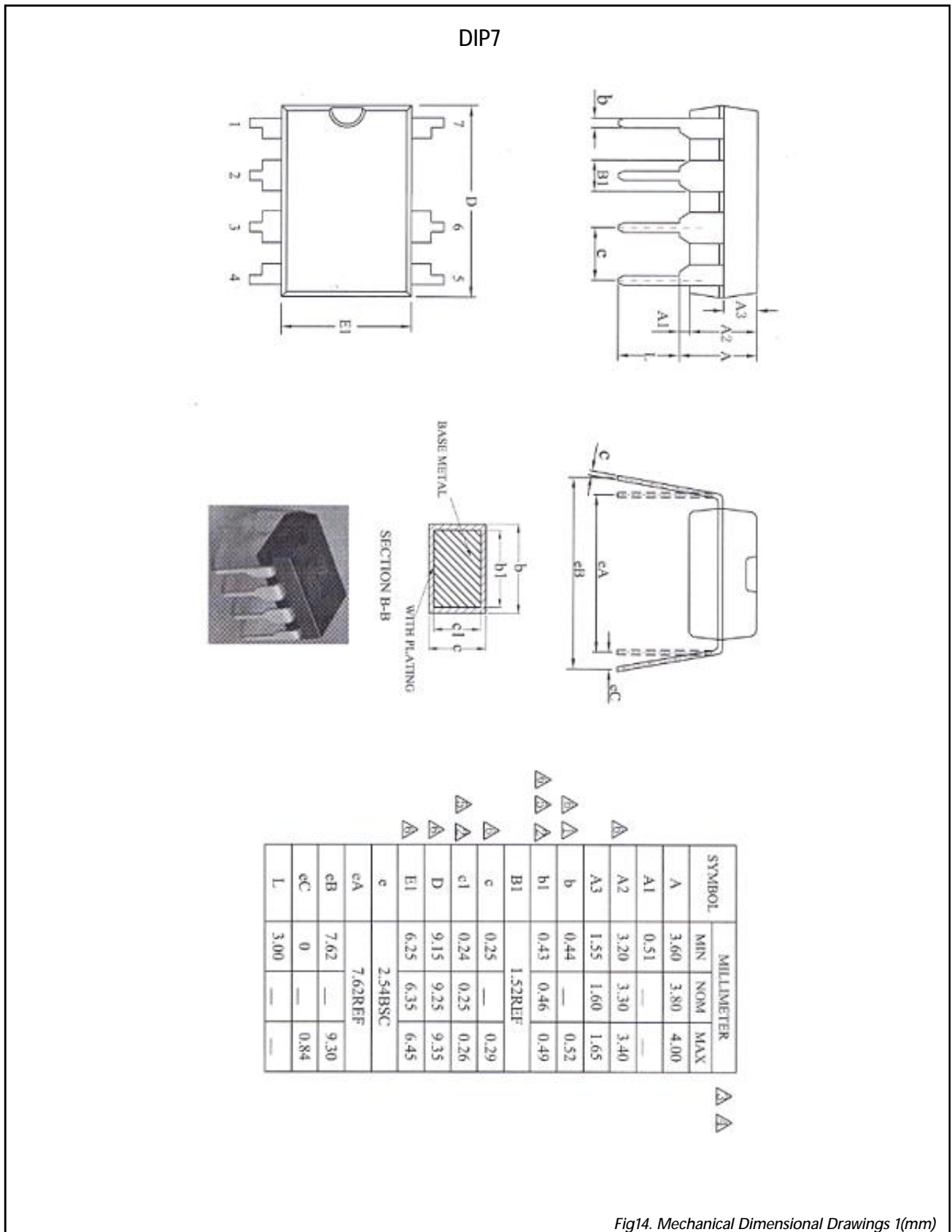


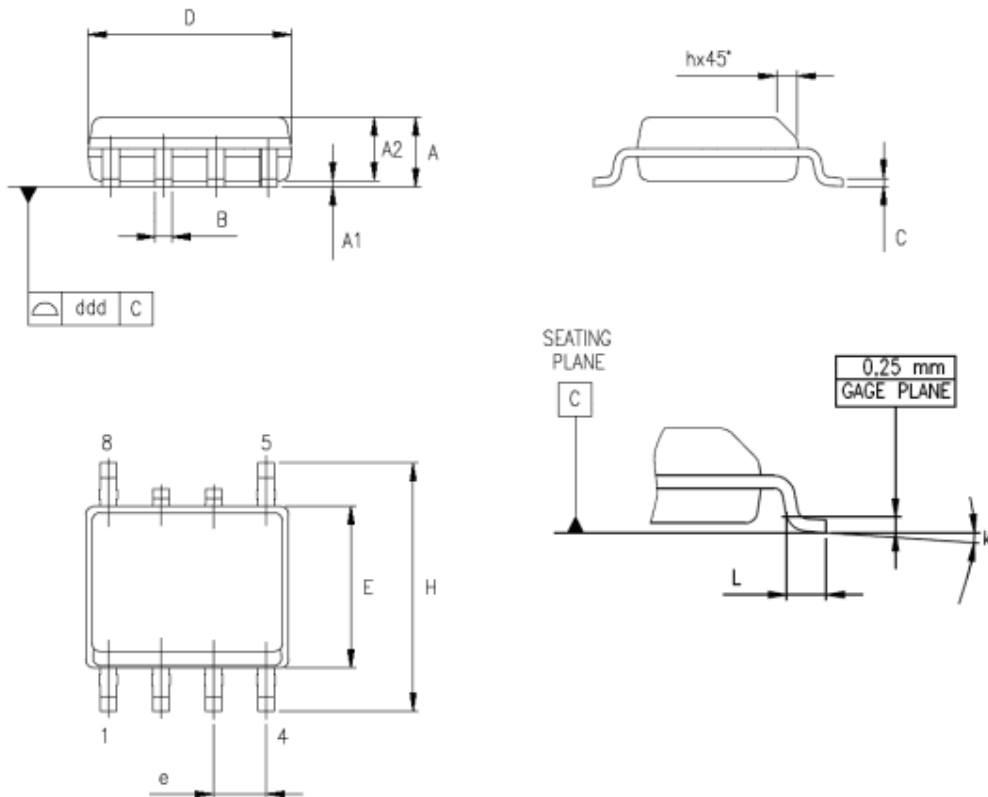
Fig11. Negative voltage output application diagram2

Note: When the chip in the above figure is replaced with LN8K05B, the output voltage of 7.5V can be obtained.
When the chip in the above figure is replaced with LN8K05B, the output voltage of 7.5V can be obtained.

15. Mechanical and Packaging





SOP6L



Dimensions			
Ref.	Databook (mm.)		
	Nom.	Min.	Max.
A	1.35		1.75
A1	0.10		0.25
A2	1.10		1.65
B	0.33		0.51
C	0.19		0.25
D	4.80		5.00
E	3.80		4.00
e		1.27	
H	5.80		6.20
h	0.25		0.50
L	0.40		1.27
k	8° (max.)		
ddd			0.1


Fig15. Mechanical Dimensional Drawings 2(mm)

16. Orderable Information

Part Number	Marking	package	Quantity per Tube
LN8K05A	 LN8K05 A YYWWZ	DIP7	50 PCS/TUBE
LN8K05AM	 LN8K05 A YYWWZ	SOP6	100 PCS/TUBE

Part Number	Output Voltage
LN8K05A	5V
LN8K05B	7.5V
LN8K05C	12.5V

17. Important Notice

力生美、Lii semi、 等均为力生美半导体的商标或注册商标，未经书面允许任何单位、公司、个人均不得擅自使用，所发布产品规格书之著作权均受相关法律法规所保护，力生美半导体保留全部所有之版权，未经授权不得擅自复制其中任何部分或全部之内容用于商业目的。

产品规格书仅为所描述产品的特性说明之用，仅为便于使用相关之产品，力生美半导体不承诺对文档之错误完全负责，并不承担任何因使用本文档所造成的任何损失，本着产品改进的需要，力生美半导体有权在任何时刻对本文档进行必要的修改，并不承担任何通知之义务。英文规格书皆由中文规格书翻译而来，相关内容均以中文规格书为准。

力生美半导体系列产品均拥有相关技术之自主专利，并受相关法律法规保护，未经授权不得擅自复制、抄袭或具有商业目的的芯片反向工程，力生美半导体保留相关依法追究之权利。

力生美半导体不对将相关产品使用于医学、救护等生命设备所造成的任何损失承担责任或连带责任，除非在交易条款中明确约定。

最新信息请访问：

www.liisemi.com