

NOTES:

特性: Specifications

电器 Electrical:

接触阻抗: 初始最大不超过40mΩMax, 测试后变化值不超过10mΩMax

耐电压: AC200V 60S/MIN, 0.5mA Max; DC500V, 60S/MIN, 100ΩMax

绝缘阻抗: 100M ohms MIN

额定电流: 2A MAX

额定电压: 10V MAX

材料: Material:

Molding: LCP料黑多耐高温塑胶

端子: C2680 T=0.20mm

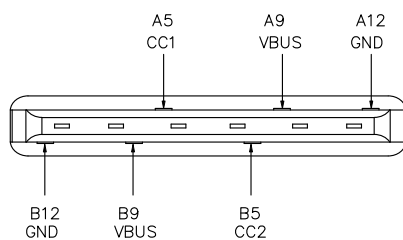
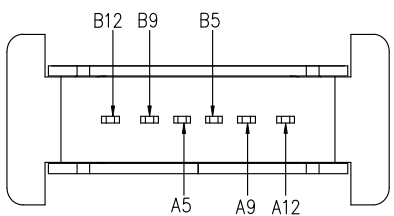
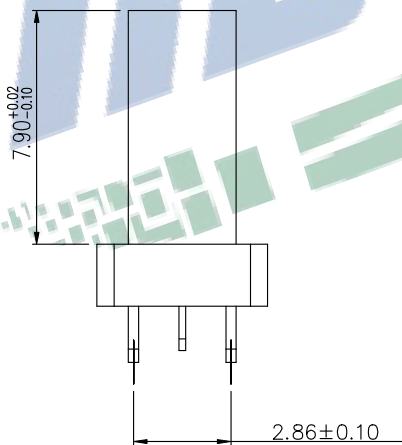
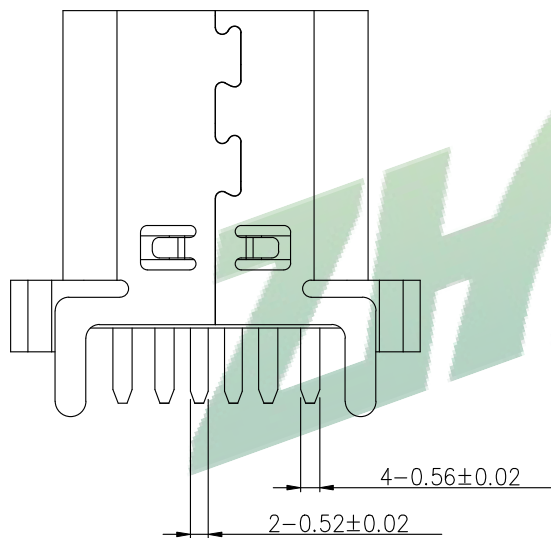
外壳: SUS201 T=0.30mm

电镀规格:

端子: 半金锡, 接触点镀金1u", 焊线处镀雾锡40-80u"

外壳: 镀镍80u"

环保要求: ROHS, REACH标准



<b>振端精密科技 (深圳) 有限公司</b> Zhenduan precision technology (Shenzhen) Co., Ltd			
TOLERANCE: X.X ±0.30 X.XX ±0.20 X.XXX ±0.10 X.XX ±0.10 X.X ±0.10 X.X ±0.10 X.X ±0.10	DRAWN BY: 刘志强 DATE: 2015.08.18	PART NAME: TYPE-C6PIN沉板1.2四脚插板H6.8	
UNIT: mm [inch] SCALE: 1:1 SIZE: A4	CHECKED BY: 李文毅 DATE: 2015.08.18	PART NO. MOLD NO.	SEE TABLE
APPROVED BY: 张少辉 DATE: 2015.08.18	DRAW NO: ZDJNKJ00000001 SHEET NO: 1 OF 1		