

特性:

一、电气性能: EICTRICAL

1. 额定电流: 5.0A
2. 接触阻抗: 40 MILLIOHMS MAX
3. 耐电压: 100V AC / 1 mA MAX
4. 绝缘阻抗: 150V DC/100 MEGA OHMS MIN

二、机械性能:

1. 插入力: 5~20N ; 拔出力: 8~20N
2. 使用寿命: 10000次

三、材料: MATERIAL

四、电镀: FINISH

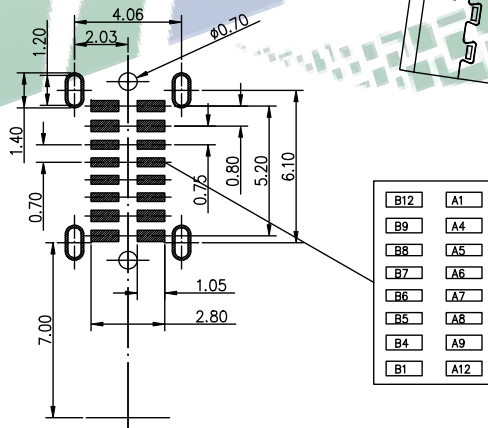
1. 端子: 接触点镀金1u"MIN
PIN脚焊接区域镀金G/F
2. 外壳: 镀镍80u"MIN

- 五、电镀品需做粘锡测试: 粘锡面积达到95%以上。
- 六、SMT回流焊(峰值260°C±5°C)不能起泡、熔胶、变色不良(变形在公差范围以内)

- 七、工作温度: -55°C~+85°C

- 八、盐雾测试: 通过48H在浓度为5±1%盐水的盐雾测试无生锈现象

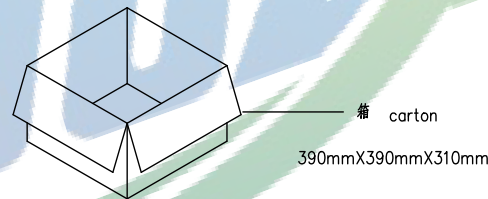
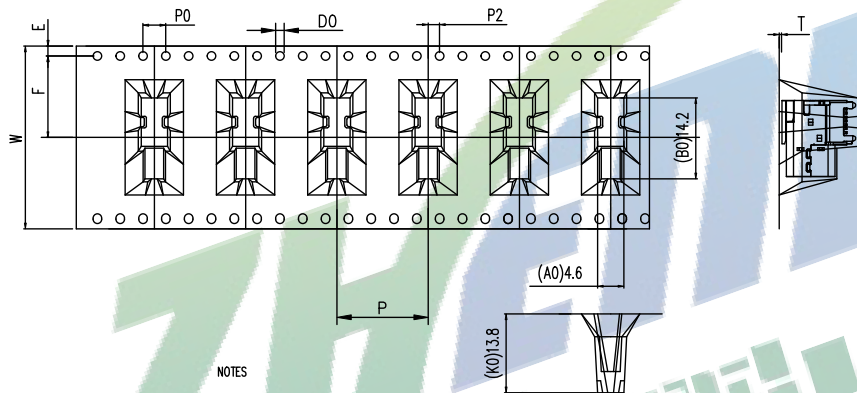
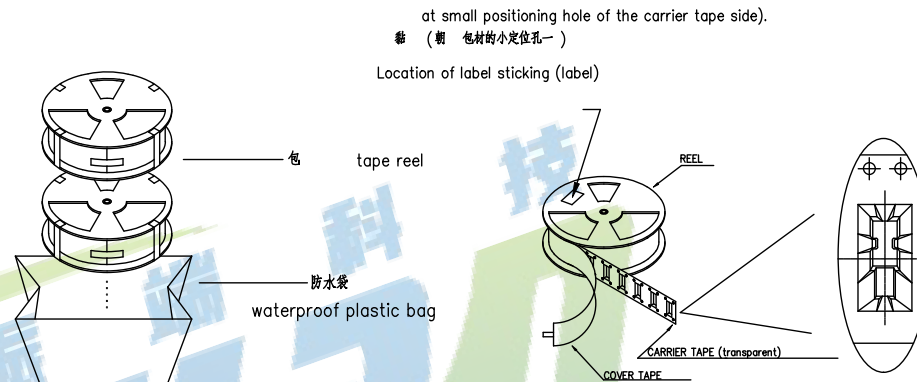
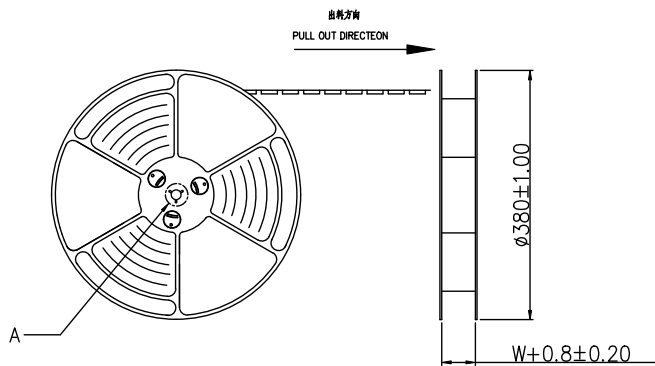
A1	GND	B12	GND
A2		B11	
A3		B10	
A4	VBUS	B9	VBUS
A5	CC1	B8	SBU2
A6	D+	B7	D-
A7	D-	B6	D+
A8	SBU1	B5	CC2
A9	VBUS	B4	VBUS
A10		B3	
A11		B2	
A12	GND	B1	GND



BOM				
序号	名称	料号	用量	品名规格
1	外壳	TC01005	1	Typec侧贴16PIN 4.58外壳 SUS304 T=0.30mm
2	Molding 3	TC03011	1	Typec侧贴 SMT 16PIN Molding C7025 LCP黑色 H=4.58 半成品
2.1	Molding 1	TC03007	1	Typec侧贴 SMT 16PIN Molding A C7025 LCP黑色 H=4.58
2.2	Molding 2	TC03009	1	Typec侧贴 SMT 16PIN Molding B C7025 LCP黑色 H=4.58
2.3	卡勾	TC02016	1	Typec侧贴 SMT 16PIN 卡勾 SUS301 T=0.15mm

zhenduan 振端精密科技(深圳)有限公司
Zhenduan precision technology (Shenzhen) Co., Ltd

TOLERANCE: X.XX ±0.30 X.XXX ±0.20 X.XXX ±0.10 X.X ±0.10 X.X ±0.05	DRAWN BY: 刘志强	DATE: 2015.08.18	PART NAME: TYPE-C16P侧贴垫高6.70MM	
UNIT: mm [inch]	CHECKED BY: 李毅	DATE: 2015.08.18	PART NO.	SEE TABLE
SCALE: 1:1	APPROVED BY: 张少辉	DATE: 2015.08.18	MOLD NO.	
SIZE: A4			DRAW NO:	ZDJNK100001617
			SHEET NO.	1 OF 1

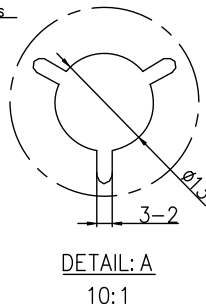
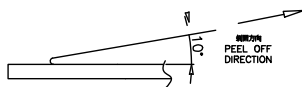


NOTE:
 1. 每包量及每箱量如左下表
 Packing q'ty of each reel & carton as below table shown.
 2. 品需放入箱并以封口
 Put reels in the carton and use adhesive tape to seal up.

NOTES
 1. 子明度
 LEAD TAPE LENGTH
 出料方向
 PULL OUT DIRECTION

W	32±0.3
F	14.2±0.1
S0	±0.1
T	0.50±0.1
E	1.75±0.1
P	16.0±0.1
P0	4±0.1
P2	2±0.15
A0	4.60±0.1
B0	14.2±0.1
K0	13.8±0.1
D0	1.50 ^{+0.1} / _{-0.1}

2. 上 力: 0.1~1.3N(10.2gf~130gf)
 PEELING OFF FORCE OF TOP TAPE: 0.1~1.3N(10.2gf~130gf)
 出料方向
 THIS REQUIREMENT SHOULD BE APPLIED AT SHIPMENT:
 在 过程中
 PEELING OFF SHOULD NOT BE ALLOWED DURING TRANSPORTATION



卷带	规格: $\phi 380\text{mm}$	包装数量: 400PCS
纸箱	规格: 390mmX390mmX310mm	包装数量: 8盘 / 3200PCS

振端精密科技 (深圳) 有限公司
 Zhenduan precision technology (Shenzhen) Co., Ltd

TOLERANCE: X X ±0.30 X XX ±0.20 X XXX ±0.10 X . ±10° X ° ±5°	DRAWN BY :	DATE :	PART NAME:	
	刘志强	2015.08.18	TYPE-C16P侧贴垫高6.70MM	
UNIT: mm [inch] SCALE: 1:1 SIZE: A4	CHECKED BY :	DATE :	PART NO.	SEE TABLE
	李毅	2015.08.18	MOLD NO.	
	APPROVED BY :	DATE :	DRAW NO.:	ZD.JNK.T00001617
	张少辉	2015.08.18	SHEET NO.	1 OF 1