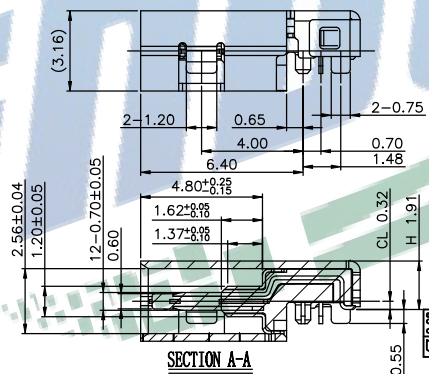
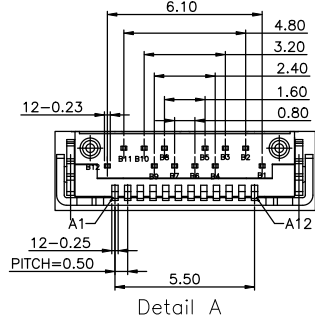


SECTION B-B
SCALE 1:1



SECTION A-A
SCALE 1:1

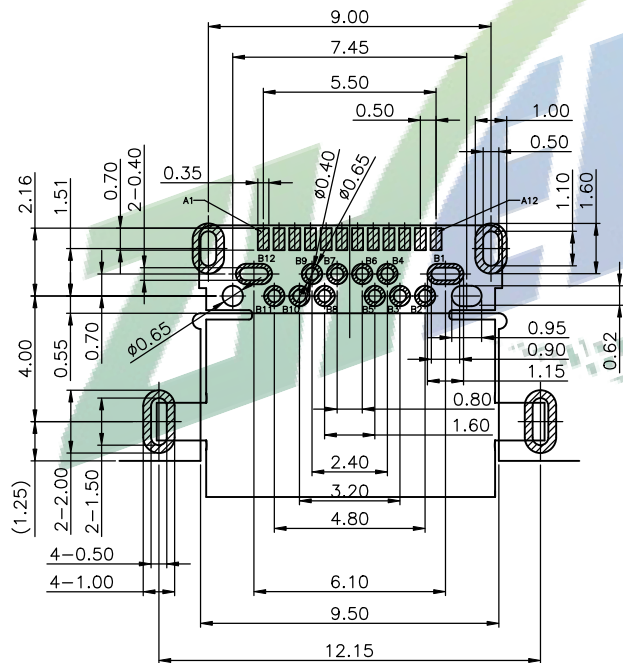
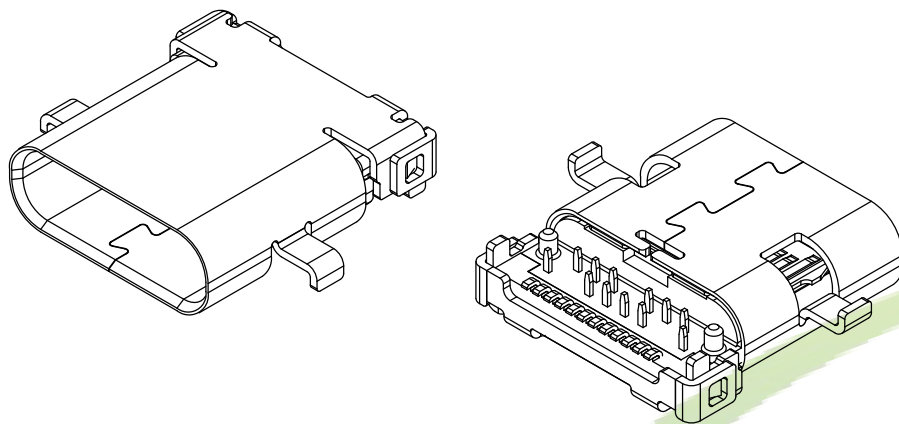


Detail A

- NOTES:
- MATERIAL:
 - MOLDING: LCP UL94 V-0
 - CONTACT: COPPER ALLOY.
 - GOLD PLATED Min ON CONTACT AREA, 100u"
 - Min TIN (LEAD FREE) ON SOLDER AREA,
 - SHELL: SUS304-H,T=0.30±0.03mm
 - 50u" NICKEL PLATING OVER ALL.
 - SHILD: SUS304-H,T=0.12±0.03mm
 - MECHANICAL:
 - INSERTION: 5~20N.
 - EXTRACTION: 8~20N AFTER TEST.
 - DURABILITY: 10000 CYCLES
 - ELECTRICAL:
 - CURRENT: 5A FOR VBUS;
 - 1.25A FOR GND PIN.
 - 0.25A FOR OTHER.
 - VOLTAGE: 20 V MAX
 - WITHSTANDING VOLTAGE: 100V AC R.M.S.
 - CONTACT RESISTANCE: 40mΩ MAX.
 - INSULATION RESISTANCE: 100MΩ MIN.
 - ENVIRONMENTAL
 - TEMPERATURE RANGE -25°C ~ +85°C

振端精密科技 (深圳) 有限公司
Zhenduan precision technology (Shenzhen) Co., Ltd

| | | | | |
|--|---------------|------------|--------------------|----------------|
| TOLERANCE: X.X ±0.30 X.XX ±0.20 X.XXX ±0.10 X.° ±10° X.°° ±5° X.°°° ±0.05° | DRAWN BY : | DATE : | PART NAME: | |
| | 刘志强 | 2015.08.18 | TYPE-C24P沉板短体H8.65 | |
| UNIT: mm [inch] SCALE: 1:1 SIZE: A4 | CHECKED BY : | DATE : | PART NO. | SEE TABLE |
| | 李毅 | 2015.08.18 | MOLD NO. | |
| | APPROVED BY : | DATE : | DRAW NO.: | ZDJNKJ00002418 |
| | 张少辉 | 2015.08.18 | SHEET NO. | 1 OF 1 |



RECOMMEND P.C.B LAYOUT (COMPONENT SIDE)

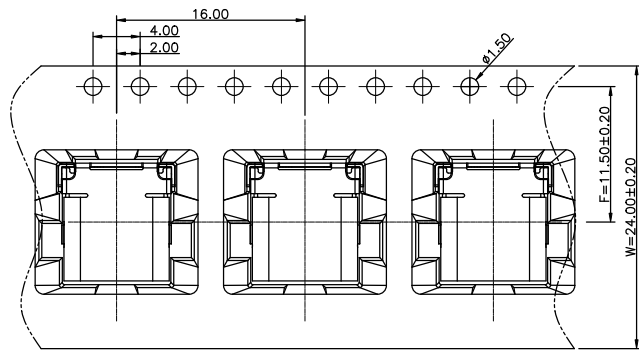
TOLERANCE FOR PCB LAYOUT IS ± 0.05
KEEP OUT AREA

USB TYPE-C FULL-FEATURED RECEPTACLE INTERFACE PIN ASSIGNMENTS

| PIN | Signal Name | Description | PIN | Signal Name | Description |
|-----|-------------|---|-----|-------------|---|
| A1 | GND | Ground return | B12 | GND | Ground return |
| A2 | SSTXp1 | Positive half of first SuperSpeed TX differential pair | B11 | SSRXp1 | Positive half of first SuperSpeed RX differential pair |
| A3 | SSTXn1 | Negative half of first SuperSpeed TX differential pair | B10 | SSRXn1 | Negative half of first SuperSpeed RX differential pair |
| A4 | VBUS | Bus Power | B9 | VBUS | Bus Power |
| A5 | CC1 | Configuration Channel | B8 | SBU2 | Sideband Use (SBU) |
| A6 | Dp1 | Positive half of the USB 2.0 differential pair-Position 1 | B7 | Dn2 | Negative half of the USB 2.0 differential pair-Position 2 |
| A7 | Dn1 | Negative half of the USB 2.0 differential pair-Position 1 | B6 | Dp2 | Positive half of the USB 2.0 differential pair-Position 2 |
| A8 | SBU1 | Sideband Use (SBU) | B5 | CC2 | Configuraation Channel |
| A9 | VBUS | Bus Power | B4 | VBUS | Bus Power |
| A10 | SSRXn2 | Negative half of second SuperSpeed RX differential pair | B3 | SSTXn2 | Negative half of second SuperSpeed TX differential pair |
| A11 | SSRXp2 | Positive half of second SuperSpeed RX differential pair | B2 | SSTXp2 | Positive half of second SuperSpeed TX differential pair |
| A12 | GND | Ground return | B1 | GND | Ground return |

zhenduan 振端精密科技 (深圳) 有限公司
Zhenduan precision technology (Shenzhen) Co., Ltd

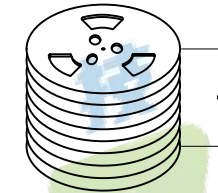
| | | | | |
|--|---------------|------------|--------------------|----------------|
| TOLERANCE: X.X ±0.30 X.XX ±0.20 X.XXX ±0.10 X.XX ±0.10 X.X ±0.05 X.X ±0.05 | DRAWN BY : | DATE : | PART NAME: | |
| | 刘志强 | 2015.08.18 | TYPE-C24P沉板短体H8.65 | |
| UNIT: mm [inch] SCALE: 1:1 SIZE: A4 | CHECKED BY : | DATE : | PART NO. | SEE TABLE |
| | 李毅 | 2015.08.18 | MOLD NO. | |
| | APPROVED BY : | DATE : | DRAW NO.: | ZDJNKJ00002418 |
| | 张少辉 | 2015.08.18 | SHEET NO. | 1 OF 1 |



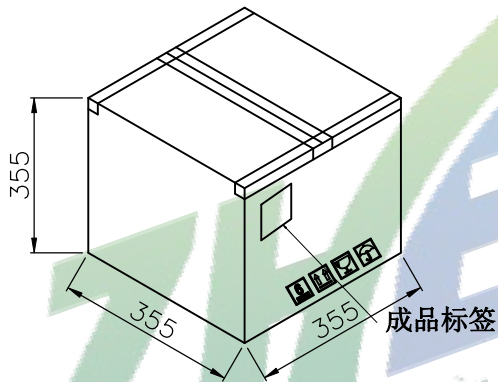
① 产品入载带示意图



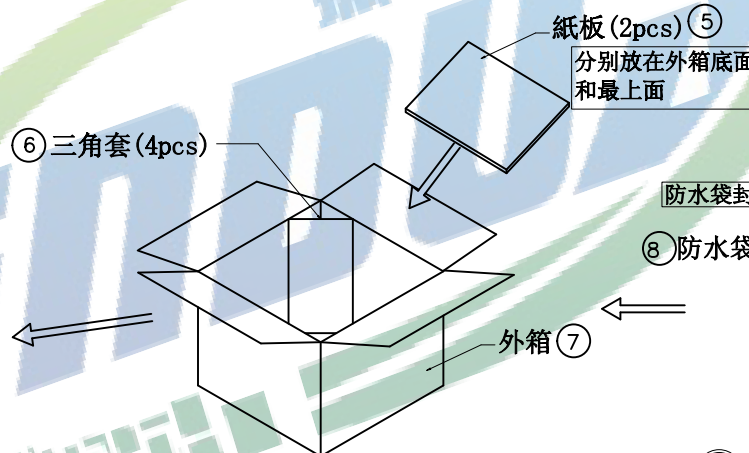
② 卷盘贴标签示意图



③ 8盘产品叠层示意图

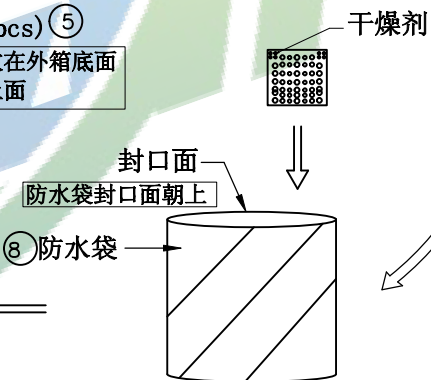


⑥ 外箱封箱示意图



⑤ 产品入外箱示意图

图四



④ 8盘产品入防水袋示意图

图三

包装说明:

1. 将检验好的成品;SMT朝下放入载带底部;每卷装1000PCS产品;具体如图一所示
2. 将包装好的产品;每盘必需贴上内标签;具体如图二所示
3. 将贴好内标签的产品每8盘叠一层装入防水袋中并加一包干燥剂;装好后将防水袋封好;具体如图三图四所示
4. 先将1pcs平卡放入纸箱底部;然后将装好产品的防水袋装入纸箱中;防水袋热熔封口,封口面需朝上;并将4PCS三角套分别装入4个角;如图五所示
5. 装好后将1pcs平卡放入纸箱最上面并封好纸箱及贴好相关标签;具体如图六所示;(产品包装的标签,如客户有要求,请按客户要求包装出货)
6. 载带前面留30PCS空格,后面留20PCS空格
7. COVER与CARRY剥离力:50-125g,速度:300mm/分钟左右,剥离角度:165°-180°

| | | | |
|---|----------------------------|----------------------|---|
| 振端精密科技(深圳)有限公司 Zhenduan precision technology (Shenzhen) Co., Ltd | | | |
| TOLERANCE: X:XX ±0.30 X:XXX ±0.20 X:XXX ±0.10 X:XX ±10° X:XX ±8° X:XX ±5° | DRAWN BY : 刘志强 | DATE : 2015.08.18 | PART NAME: TYPE-C24P沉板短体H8.65 |
| UNIT: mm [inch] SCALE: 1:1 SIZE: A4 | CHECKED BY: 李毅 | DATE : 2015.08.18 | PART NO. SEE TABLE MOLD NO. |
| | APPROVED BY: 张少辉 | DATE : 2015.08.18 | DRAW NO: ZDJNKJ00002418 SHEET NO. 1 OF 1 |