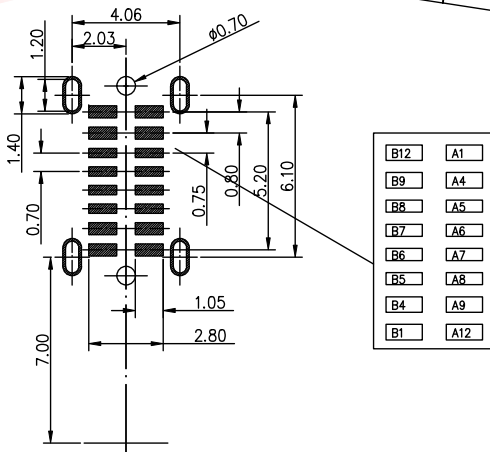


A1	GND	B12	GND
A2		B11	
A3		B10	
A4	VBUS	B9	VBUS
A5	CC1	B8	SBU2
A6	D+	B7	D-
A7	D-	B6	D+
A8	SBU1	B5	CC2
A9	VBUS	B4	VBUS
A10		B3	
A11		B2	
A12	GND	B1	GND



特性:

一、电气性能: EICTRICAL

1. 额定电流: 5.0A
2. 接触阻抗: 40 MILLIOHMS MAX
3. 耐电压: 100V AC / 1 mA MAX
4. 绝缘阻抗: 150V DC/100 MEGA OHMS MIN

二、机械性能:

1. 插入力: 5~20N ; 拔出力: 8~20N
2. 使用寿命: 10000次

三、材料: MATERIAL

四、电镀: FINISH

1. 端子: 接触点镀金1u"MIN  
PIN脚焊接区域镀金G/F
2. 外壳: 镀镍80u"MIN

五、电镀品需做粘锡测试: 粘锡面积达到95%以上。

六、SMT回流焊(峰值260°C±5°C)不能起泡、熔胶、变色不良(变形在公差范围以内)

七、工作温度: -55°C~+85°C

八、盐雾测试: 通过48H在浓度为5±1%盐水的盐雾测试无生锈现象

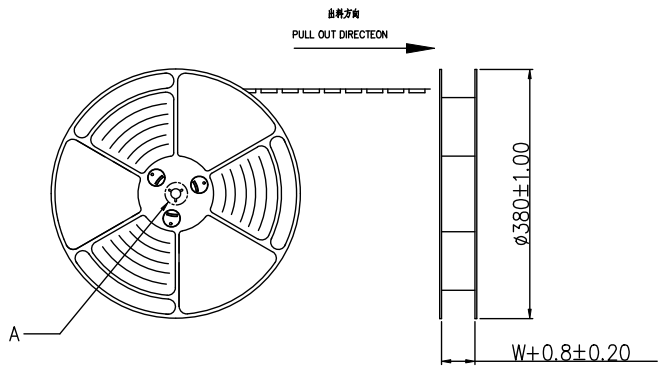
BOM

序号	名称	料号	用量	品名规格
1	外壳	TC01005	1	Type:侧贴16PIN 4.58外壳 SUS304 T=0.30mm
2	Molding 3	TC03011	1	Type:侧贴 SMT 16PIN Molding C7025 LCP黑色 H=4.58 半成品
2.1	Molding 1	TC03007	1	Type:侧贴 SMT 16PIN Molding A C7025 LCP黑色 H=4.58
2.2	Molding 2	TC03009	1	Type:侧贴 SMT 16PIN Molding B C7025 LCP黑色 H=4.58
2.3	卡勾	TC02016	1	Type:侧贴 SMT 16PIN 卡勾 SUS301 T=0.15mm

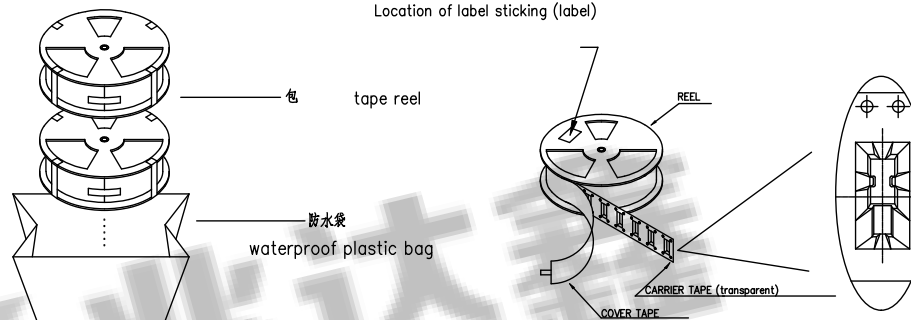
**ZDX** 深圳市兆达鑫科技有限公司  
Shenzhen Zhao Xin Technology Co., Ltd.

TOLERANCE: X:XX ±0.30 X:XXX ±0.20 X:XXX ±0.10 X:XX ±0.10 X:XX ±0.05 X:XX ±0.05	DRAWN BY:	DATE:	PART NAME:	
	刘志强	2015.08.18	TYPE-C16P侧贴垫高4.58MM	
	CHECKED BY:	DATE:	PART NO.	SEE TABLE
	李毅	2015.08.18	MOLD NO.	
	APPROVED BY:	DATE:	DRAW NO.:	ZDJNKJ00001616
	张少辉	2015.08.18	SHEET NO.:	1 OF 1

UNIT: mm [inch]  
SCALE: 1:1 SIZE: A4



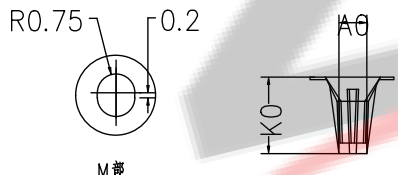
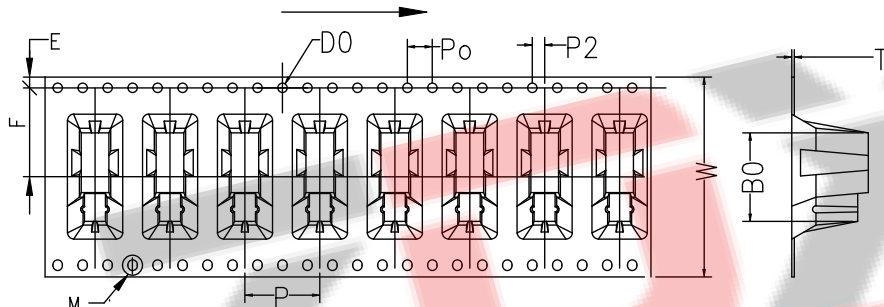
at small positioning hole of the carrier tape side.  
 轴 (朝 包材的小定位孔一)  
 Location of label sticking (label)



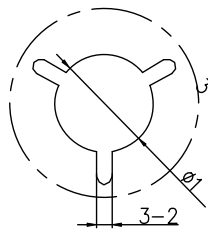
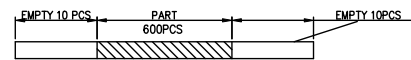
NOTE:  
 1. 每包量及每箱箱量如左下表。  
 Packing q'ty of each reel & carton as below table shown.  
 2. 每包卷放入箱并以封口。  
 Put reels in the carton and use adhesive tape to seal up.

390mmX390mmX310mm

卷带	规格: $\phi 380\text{mm}$	包装数量: 600PCS
纸箱	规格: 390mmX390mmX310mm	包装数量: 8盘 / 4800PCS



NOTES  
 1. 引长度  
 LEAD TAPE LENGTH  
 出料方向  
 PULL OUT DIRECTION



2. 上力: 0.1~1.3N(10.2gf~130gf)  
 PEELING OFF FORCE OF TOP TAPE: 0.1~1.3N(10.2gf~130gf)  
 注: 程中一定注意:  
 THIS REQUIREMENT SHOULD BE APPLIED AT SHIPMENT:  
 在程中不能  
 PEELING OFF SHOULD NOT BE ALLOWED DURING TRANSPORTATION

ITEM	W	A <sub>0</sub>	A <sub>1</sub>	B <sub>0</sub>	B <sub>1</sub>	K <sub>0</sub>	K <sub>1</sub>	P	F	A	T
DIM	32.0	4.45	0.00	14.18	0.00	12.25	0.00	12.0	14.2	0.50	
	+0.30 -0.30	+0.10 -0.10		+0.10 -0.10	+0.10 -0.10	+0.10 -0.10	+0.10 -0.10	+0.10 -0.10	+0.15 -0.15	+0.05 -0.05	

**ZDX** 深圳市兆达鑫科技有限公司  
 Shenzhen Zhao Xin Technology Co., Ltd.

TOLERANCE: XXX ±0.30 XX ±0.20 X XXX ±0.10 X: ±10° X: ±5°	DRAWN BY : 刘志强	DATE : 2015.08.18	PART NAME: TYPE-C16P侧贴垫高4.58MM
UNIT: mm [inch] SCALE: 1:1 SIZE: A4	CHECKED BY: 李毅	DATE : 2015.08.18	PART NO. SEE TABLE
	APPROVED BY: 张少辉	DATE : 2015.08.18	MOLD NO.
			DRAW NO: ZDJNKJ00001616
			SHEET NO. 1 OF 1