

特性:

一、电气性能: EICTRICAL

1. 额定电流: 5.0A
2. 接触阻抗: 40 MILLIOHMS MAX
3. 耐电压: 100V AC / 1 mA MAX
4. 绝缘阻抗: 150V DC/100 MEGA OHMS MIN

二、机械性能:

1. 插入力: 5~20N ; 拔出力: 8~20N
2. 使用寿命: 10000次

三、材料: MATERIAL

四、电镀: FINISH

1. 端子: 接触点镀金1u"MIN
PIN脚焊接区域镀金G/F
2. 外壳: 镀镍80u"MIN

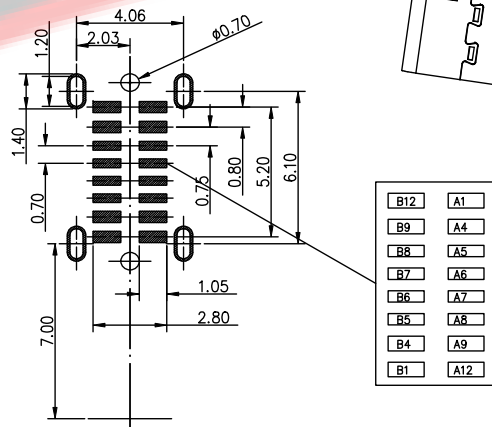
五、电镀品需做粘锡测试: 粘锡面积达到95%以上。

六、SMT回流焊(峰值260°C±5°C)不能起泡、熔胶、变色不良(变形在公差范围以内)

七、工作温度: -55°C~+85°C

八、盐雾测试: 通过48H在浓度为5±1%盐水的盐雾测试无生锈现象

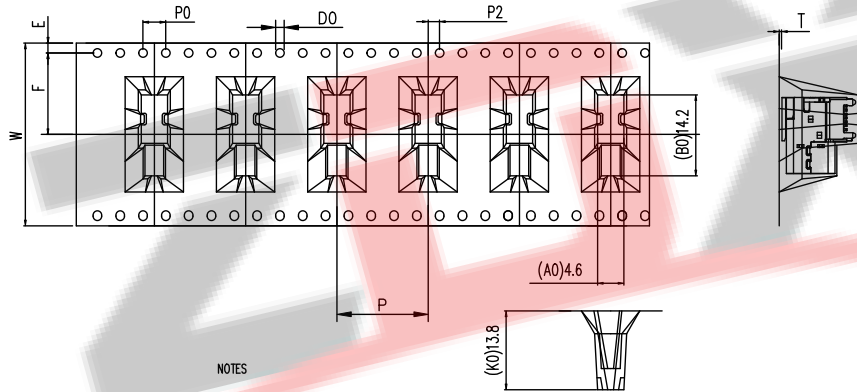
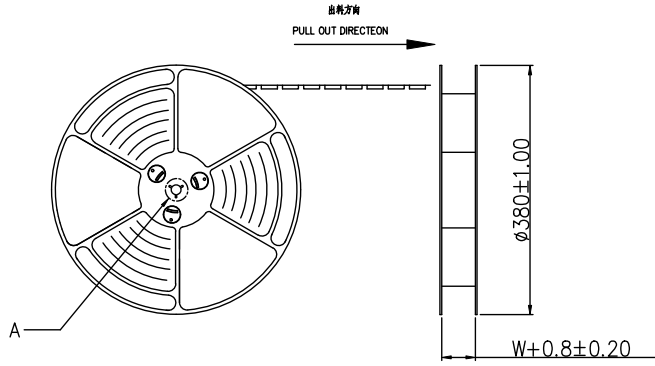
A1	GND	B12	GND
A2		B11	
A3		B10	
A4	VBUS	B9	VBUS
A5	CC1	B8	SBU2
A6	D+	B7	D-
A7	D-	B6	D+
A8	SBU1	B5	CC2
A9	VBUS	B4	VBUS
A10		B3	
A11		B2	
A12	GND	B1	GND



BOM				
序号	名称	料号	用量	品名规格
1	外壳	TC01005	1	Typec侧贴16PIN 4.58外壳 SUS304 T=0.30mm
2	Molding 3	TC03011	1	Typec侧贴 SMT 16PIN Molding C7025 LCP黑色 H=4.58 半成品
2.1	Molding 1	TC03007	1	Typec侧贴 SMT 16PIN Molding A C7025 LCP黑色 H=4.58
2.2	Molding 2	TC03009	1	Typec侧贴 SMT 16PIN Molding B C7025 LCP黑色 H=4.58
2.3	卡勾	TC02016	1	Typec侧贴 SMT 16PIN 卡勾 SUS301 T=0.15mm

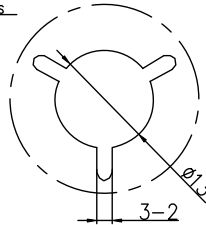
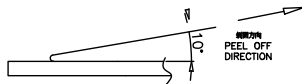
深圳市兆达鑫科技有限公司
 Shenzhen Zhao Xin Technology Co., Ltd.

TOLERANCE: X:XX ±0.30 X:XXX ±0.20 X:XXX ±0.10 X:XX ±0.05 X:XX ±0.02 X:XX ±0.01	DRAWN BY : 刘志强 DATE : 2015.08.18	PART NAME: TYPE-C16P侧贴垫高6.70MM	
	CHECKED BY : 李毅 DATE : 2015.08.18	PART NO. : SEE TABLE	MOLD NO. :
UNIT: mm [inch] SCALE: 1:1 SIZE: A4	APPROVED BY : 张少辉 DATE : 2015.08.18	DRAW NO. : ZDJNKJ00001617	SHEET NO. : 1 OF 1



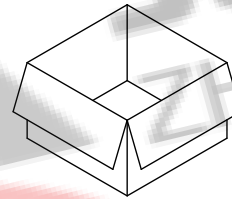
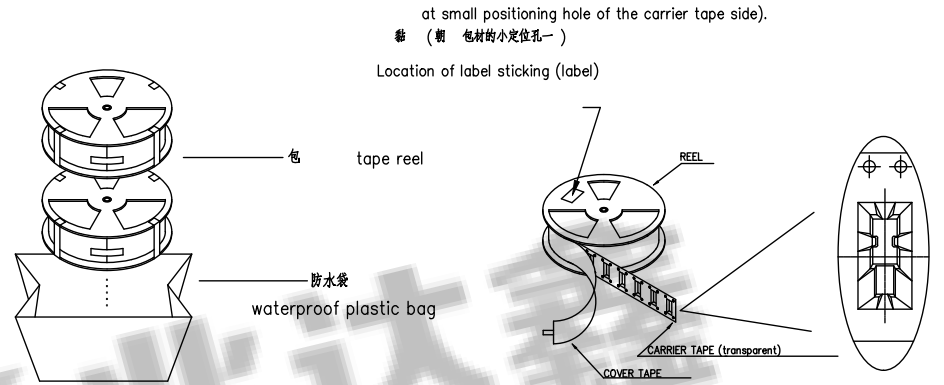
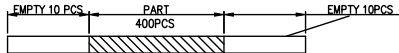
NOTES
1. 引带长度
LEAD TAPE LENGTH
出料方向
PULL OUT DIRECTEON

2. 上 力: $0.1 \sim 1.3N$ ($10.2gf \sim 130gf$)
PEELING OFF FORCE OF TOP TAPE: $0.1 \sim 1.3N$ ($10.2gf \sim 130gf$)
出料过程中注意:
THIS REQUIREMENT SHOULD BE APPLIED AT SHIPMENT:
卷在带中不能散
PEELING OFF SHOULD NOT BE ALLOWED DURING TRANSPORTATION



DETAIL: A
10:1

W	32±0.3
F	14.2±0.1
S0	±0.1
T	0.50±0.1
E	1.75±0.1
P	16.0±0.1
P0	4±0.1
P2	2±0.15
A0	4.60±0.1
B0	14.2±0.1
K0	13.8±0.1
D0	1.50 $\begin{matrix} +0.1 \\ -0.1 \end{matrix}$



NOTE:
1. 每包量及每箱量如左下表
Packing q'ty of each reel & carton as below table shown.
2. 品卷放入箱并以封口
Put reels in the carton and use adhesive tape to seal up.

卷带	规格: $\phi 380mm$	包装数量: 400PCS
纸箱	规格: $390mm \times 390mm \times 310mm$	包装数量: 8盘 / 3200PCS

ZDX 深圳市兆达鑫科技有限公司
Shenzhen Zhao Xin Technology Co., Ltd.

TOLERANCE: X X ±0.30 X XX ±0.20 X XXX ±0.10 X . ±10° X . ±5°	DRAWN BY : 刘志强	DATE : 2015.08.18	PART NAME: TYPE-C16P侧贴垫高6.70MM
UNIT: mm [inch] SCALE: 1:1 SIZE: A4	CHECKED BY: 李毅	DATE : 2015.08.18	PART NO. SEE TABLE
	APPROVED BY: 张少辉	DATE : 2015.08.18	MOLD NO.
			DRAW NO: ZDJNK100001617
			SHEET NO. 1 OF 1