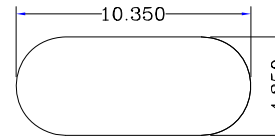
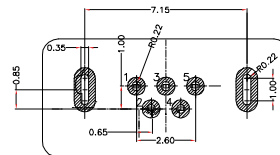
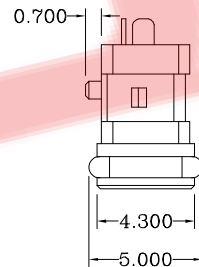
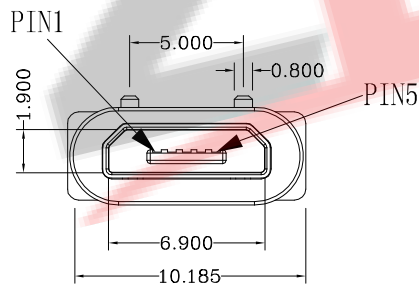
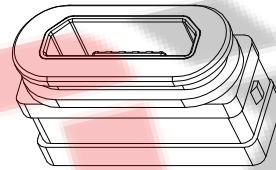
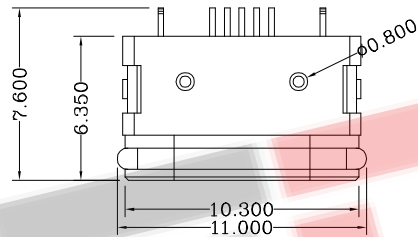


组装示意图



建议开口尺寸
组装时擦环保润滑油



RECOMMENDED P.C.B LAYOUT

| | |
|------|------|
| PIN1 | VBUS |
| PIN2 | D- |
| PIN3 | D+ |
| PIN4 | ID |
| PIN5 | GND |

规格说明: Specifications:

电气特性: Electrical:

1. 额定电流: Current Rating
1.5A/contact terminal
2. 额定电压: Voltage Rating
30V DC
3. 接触阻抗: Contact Resistance
30 milliohms MAX
4. 耐电压: Dielectric Withstanding Voltage:
500 V AC AT Sea Level
5. 绝缘阻抗: Insulation Resistance:
1000MEGA ohms MIN

物理性能: Mechanical:

1. 插拔力: Connector Mate and Unmate Force
Mate force: 3.57kgf (MAX)
Unmate force: 1.02kgf (MIN)

原材料: Material:

1. 塑胶: Housing:
LCP
 2. 端子: Contact: Copper Alloy C5191
 3. 外壳: Shell: Copper Alloy SUS
- 电镀: Finish:
1. 端子: Contact: Plated Gold in Mating Area;
Tin On Solder Talls

2. 外壳: Shell:
铜壳四周镀80U”(MIN)锡

Nickel Plating

ZDX 深圳市兆达鑫科技有限公司
Shenzhen Zhao Xin Technology Co., Ltd.

| | | | | |
|--|---------------------|----------------------|-----------------------------------|----------------|
| TOLERANCE: X.X ±0.30 X.XX ±0.20 X.XXX ±0.10 X.XX ±0.10 X.X ±0.05 X ±0.05 | DRAWN BY : 陈少龙 | DATE : 2015.08.18 | PART NAME: MC5P防水母座立式插板L6.35MM | |
| | CHECKED BY: 陈少龙 | DATE : 2015.08.18 | PART NO. | SEE TABLE |
| UNIT: mm [inch] SCALE: 1:1 SIZE: A4 | APPROVED BY: 陈少龙 | DATE : 2015.08.18 | DRAW NO: | ZDJNKJ000MC210 |
| | | | SHEET NO. | 1 OF 1 |