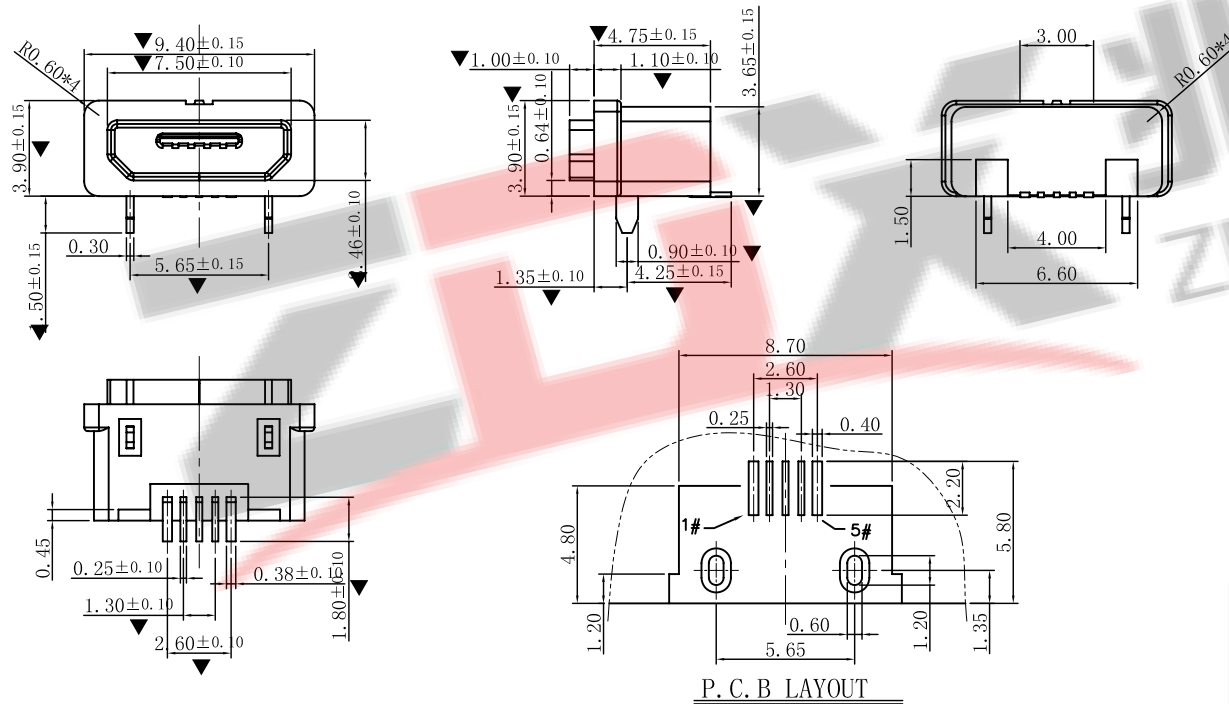
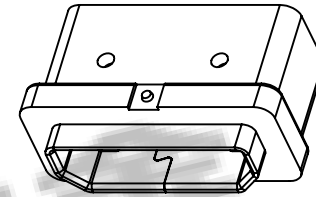


注：设计时，请注意公头插入时的距离，防止公头插不彻底。



Notes:

1. Dimension shall be interpreted per ASME Y14.5M1994.
2. Dimension marked  $\nabla$  &  $\blacktriangledown$  should be checked by Q.C. and process, engineers and  $\nabla$  should also check the CPK data.

Specification:

1. Current Rating: 2.0 AMP
2. Voltage Rating: 30V AC,DC
3. Dielectric Strength: 500V AC RMS for 1 minute.
4. Contact Resistance: 30 mΩ Max.
5. Insulator Resistance: 500M Ω Min. AT 250V DC.
6. Mating/Unmating cycles: 2000cycles
7. Temperature: -20°C to +60°C

3	Shell	1	SUS304R-1/2H Ni PlatingT=0.30mm	
2	Contact	5	Phosphor bronze C5191R-EH Au/Ni Plating T=0.20mm	
1	Housing	1	PA9T&LCP (G.F30%)	
ITEM	PART NAME	Q' TY	FINISH	NOTE

**ZDX** 深圳市兆达鑫科技有限公司  
Shenzhen Zhao Xin Technology Co., Ltd.

TOLERANCE: XXX ±0.30 XX ±0.20 X ±0.10 X ±0.10 X ±0.10 X ±0.10 X ±0.10	DRAWN BY : 陈少龙	DATE : 2015.08.18	PART NAME: MC5P防水母座小脚前插后贴
CHECKED BY: 陈少龙	DATE : 2015.08.18	PART NO.	SEE TABLE
APPROVED BY: 陈少龙	DATE : 2015.08.18	DRAW NO: ZDJNKJ000MC208	SHEET NO. 1 OF 1

Contact Number	Signal Name	Remarks
1#	VBUS	Power
2#	D-	Date-
3#	D+	Date+
4#	ID	Reserve or Gound
5#	GND	Gound



注：防水圈是圆形截面，直径为0.7mm的硅胶圈

防水圈挤压量，由0.7mm挤压到0.3mm ~ 0.4mm，防水效果好