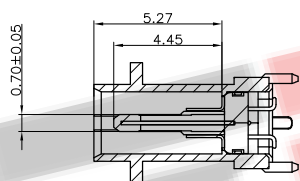
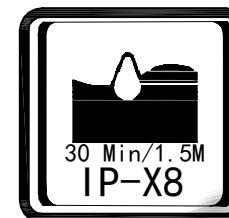
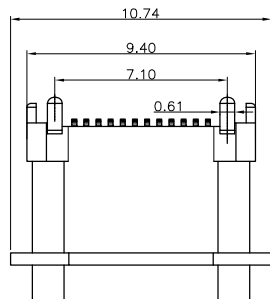
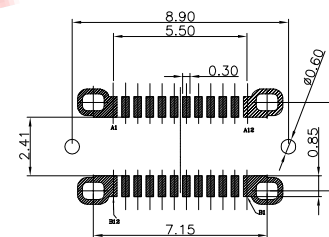
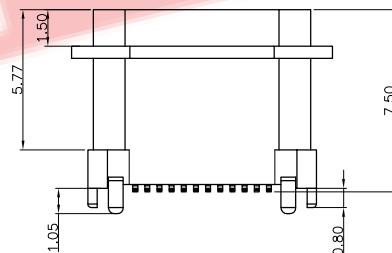
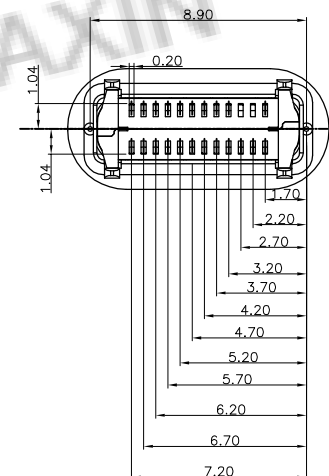
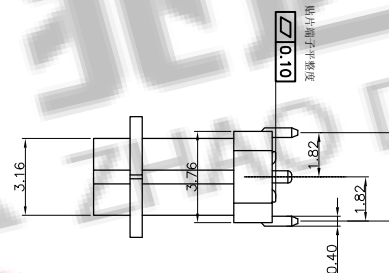
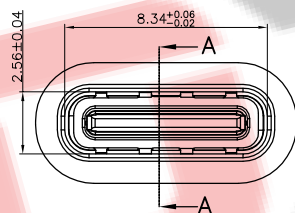


| | | | |
|-----|-------------|-----|-------------|
| A1 | GND | B12 | GND |
| A2 | SSTXP1 | B11 | SSRXP1 |
| A3 | SSTXN1 | B10 | SSRXN1 |
| A4 | VBUS | B9 | VBUS |
| A5 | CC1 | B8 | SBU2 |
| A6 | DP1 | B7 | DN2 |
| A7 | DN1 | B6 | DP2 |
| A8 | SBU1 | B5 | CC2 |
| A9 | VBUS | B4 | VBUS |
| A10 | SSRXN2 | B3 | SSTXN2 |
| A11 | SSRXP2 | B2 | SSTXP2 |
| A12 | GND | B1 | GND |
| PIN | SIGNAL NAME | PIN | SIGNAL NAME |



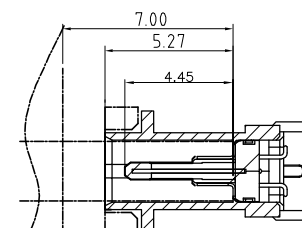
SECTION
A-A
SCALE 1:1



RECOMMENDED P.C.B. LAYOUT (T:1.00mm)
TOLERANCE UNSPECIFIED ±0.05mm

Note:

- Material:
 - Housing: LCP
 - Contact: C7025, t=0.20mm
 - Shell: SUS316
- ELECTRICAL:
 - CURRENT RATING: VBUS AND GND CONTACTS RATED AT 1.25A PARALLELED FOR A TOTAL OF 5A;
 - INITIAL CONTACT RESISTANCE :40 MEGOHMS
 - DIELECTRIC WITHSTANDING VOLTAGE: 100V AC MIN;
- MECHANICAL CHARACTERISTICS:
 - MATING FORCE: 5~20N
 - UNMATING FORCE: 8~20N (INITIAL), 6~20N (AFTER 10000 CYCLES)
 - FREQUENCY: 200±50 CYCLES / HOUR, 10000 CYCLES
 - OPERATING TEMPERATURE ; -40°~80°.



plug 插入深度参考图

| | | | |
|--|----------------------------|----------------------|--|
| 深圳市兆达鑫科技有限公司 Shenzhen Zhao Xin Technology Co., Ltd. | | | |
| TOLERANCE: X.XX ±0.30 X.XXX ±0.20 X.XXX ±0.10 X.X ±10° X.X ±0.05° | DRAWN BY : 刘志强 | DATE : 2015.08.18 | PART NAME: TYPE-C24P防水母座立贴H7.5 |
| UNIT: mm [inch] SCALE: 1:1 SIZE: A4 | CHECKED BY: 李毅 | DATE : 2015.08.18 | PART NO. SEE TABLE MOLD NO. |
| | APPROVED BY: 张少辉 | DATE : 2015.08.18 | DRAW NO. SHEET NO. 1 OF 1 |