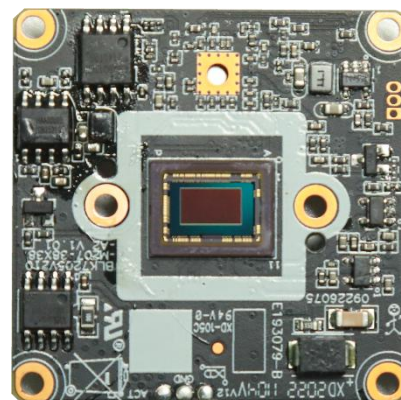


IVG-G3S 3.0M Black Light H.265 AI IP Camera Module

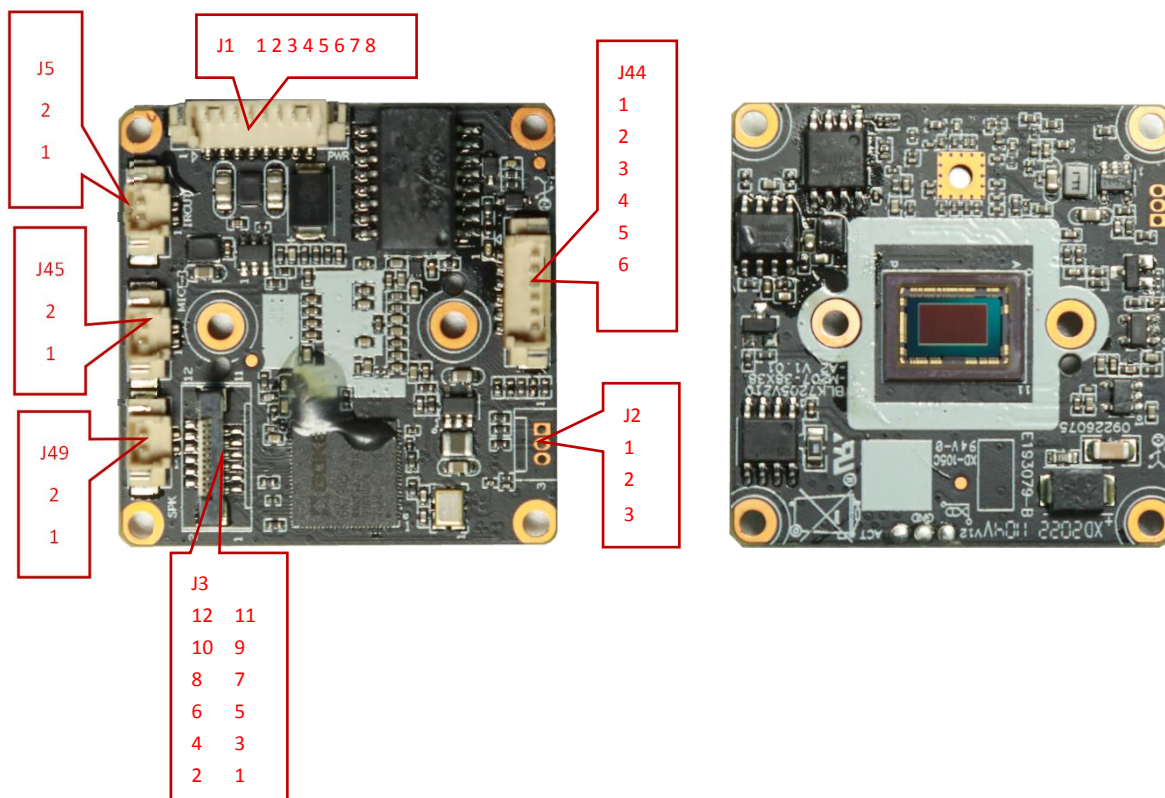
Features:

- Supporting human detection, face detection, and support to customize other intelligent functions
- 3.0MP HD Black light illumination resolution,clear and fine images;
- Support 2D/3D noise reduction,digital wide dynamic;
- Advanced H.265+ (Compatible with H.265/H.264) video compression,Super low rate,high definition quality of image;
- Professional anti-lightning,conform to GB/T17626.5 and IEC61000-4-5.
- Support ONVIF;access third party;
- Support various mobile monitoring(iPhone,Android);
- Provide web、CMS、center platform management software MYEYE,provide SDK development
- Support cloud technology,easy to achieve network penetration,fro in-line and alarm information pushed

Parameters:



Model	IVG-G3S
System structure	Embedded RTOS,dual-core 32bit DSP(GK7205V210),pure hard compression ,watch dog
Sensor	3.0M 1/2.8" Black light illumination CMOS sensor,color 0.0001Lux@F1.2,black/white 0.0001Lux@F1.2
Video compression	H.265 +(Compatible with H.265/H.264) support dual stream,AVI;0.1M~8Mbps variable;1~30f/s variable
Image output	Main stream: 2304*1296@20fps, 1920*1080@25fps; sub-stream: 800*448@25fps
Shutter	1/50(1/60)s to 1/10,000s
Lens	N/A
Day and night	Support IR-CUT,IR-CUT coil has an internal resistance of 20 ohms, the power-on time is less than 200ma, and the voltage is 3.5V-6V
Noise reduction	Support 2D/3D
Wide dynamic	Support digital Wide dynamic
Auto iris	N/A
Audio compression	G.711,support bidirectional talk,audio&video synchronization
Audio interface	1ch input,level:2Vp-p,impedance:1kΩ,support sound pick-up input;1ch output,impedance:16Ω,30mw,support microphone
Network interface	1*RJ45 10/100M adaptive Ethernet port; support RTSP/FTP/DHCP/NTP/UPnP etc
Extension interface	Support external SD、WIFI to expand other functions
Singal interface	One photo resistance interface,one IR-CUT interface ,support photo resistance signal and IR-CUT links to IR
PTZ	N/A
Motor interface	N/A
Alarm I/O	N/A
WIFI interface	N/A
Reset interface	N/A
SD Card	N/A
Reliability	Comprehensive lightning protection, 7 * 24 hours 65 °C high temperature stable and reliable testing
Intelligence analysis	Supporting human detection, face detection, and support to customize other intelligent functions
Other function	Support WEB,OSD,live video transmission,motion detect and IO alarm,front-end storage/playback/download, and center reminder and image linkage,support JPEG capture: united remote client monitoring sofaware、MYEYE;perfect SDK;
ONVIF	Support
Mobile monitoring	Support multiple mobile monitoring (iOS、Android)
Power	DC12V/2A input, power consumption:≤3W,
Dimension	38mm*38mm
Other	not support any custom,The drive voltage of the light board is at 3.3V



Socket	Specific No	Interface Description	Function
J5	1	IR-CUT	IR-CUT
	2	IR-CUT	IR-CUT
J2	1	UART0_RXD	Debug Serial port accept
	2	UART0_TXD	DebugSerial port send
	3	GND	GND
J44	1	W_LED_GPIO0_4	White light control
	2	R_LED_GPIO2_0	Infrared light signal control
	3	LED/GPIO6_5	LED control pin
	4	GND	GND
	5	IRIN_GPIO1_7	Hard light sensitive pin
	6	IO_GPIO6_4	Reserved IO/KEY
J1	1	ETH_LINK_ACT_LED	LED/PHY_AD0
	2	ETH_LINK_STA_LED	LED/PHY_AD1
	3	ETHTX+	Ethernet signal+
	4	ETHTX-	Ethernet signal-
	5	ETHRX+	Ethernet signal+
	6	ETHRX-	Ethernet signal-
	7	GND	GND

	8	12V input	12V INPUT
J45	1	MICN	MIC
	2	AC_IN	
J49	1	SPKN	SPK
	2	SPKP	
J3	1	SDIO0_CCLK_OUT	SDIO0_CCLK_OUT
	2	SD_DATA0	SD DATA0
	3	SD_DATA1	SD DATA1
	4	SD_DATA2	SD DATA2
	5	SD_DATA3	SD DATA3
	6	SD_CMD	SD_CMD
	7	WIFI_PDN	WIFI_PDN
	8	GND	GND
	9	WIFI_DN	WIFI_DN
	10	GND	GND
	11	WIFI_DP	WIFI_DP
	12	3V3	3V3